



The AMBASSADOR

SAINT LUKE'S BISHOP SPENCER PLACE

July 2019

 **Saint Luke's**
BISHOP SPENCER PLACE

ACTIVITY KEY



Celebration



Movie



Theatre



Arts



Music



Nature



Excursion



Speaker



Cocktails



Dining



**Coffee &
Conversation**



Class



Health

A few words from the CEO...



What is the spiritual meaning of July? Sunny July's symbolic meaning signifies summer and all of its radiant glory in the Northern Hemisphere. As a child, school is out and the long days of light are filled with outdoor play, swimming, and all sorts of fun. When I think back to my youth during the summer months, I am reminded of tag, hop scotch, hide-and-seek, and other imaginative outdoor

role-playing games that took up our entire block. We would frequently leave in the morning and not report back home until the street lights came on. What did you enjoy in the summer months in your youth?

Speaking of our youth...I hope you are all taking part in the photo contest occurring during the months of July and August. Photos of our residents in their younger days will be hung in the art gallery—your challenge is to guess who is who! I've had a tiny sneak peek and I think you're really going to enjoy it. I hope to see you at the reception on July 18.

"Warm" regards,
Dee

PLEASE NOTE

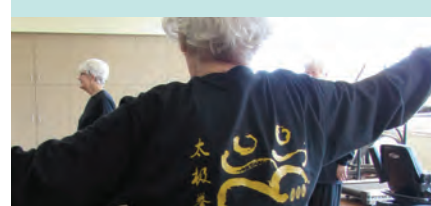
**BSP Beauty Salon
Closed July 1-7**

Please make arrangements accordingly!

Independence Day

THURSDAY, JULY 4
**Offices | Salon | Bistro
Closed**

TAI CHI



No class July 1, 3, 8, 10

Gary, our Tai Chi instructor, will be at a conference in early July. Students are welcome to meet and practice at the regular class times. Gary will return July 15.



This is a monthly magazine for residents of Saint Luke's Bishop Spencer Place.

Bishop Spencer Place ♦ 4301 Madison Ave., Kansas City, MO 64111
816-931-4277 ♦ BishopSpencerPlace.org



Watercolor Class with John Keeling

Monday, July 1
1:00–2:30 p.m. | Activity Center

Artist and illustrator John Keeling teaches watercolor on the first Monday of each month.

Enjoy an hour of Open Art on Mondays, July 8, 15, 22, and 29, from 1–2 p.m. in the Activity Center.



Spirituality & All That Jazz

Wednesday, July 3
BSP bus departs at 6:30 p.m.

Join us at Unity Temple for *Spirituality & All That Jazz*. This month, vocalist Molly Hammer, a BSP favorite, performs with Tim Whitmer and The Consort Band.

Sign up with the concierge.



Lunch & Learn | Brain Myths Exploded

Monday, July 8
Lunch | 11:30 a.m.–12:00 noon
Program | starts at 12:00 noon
Westport Room

We continue the Great Courses DVD series *Brain Myths Exploded*. Lunch begins promptly at 11:30. Talks begin at noon and run until 1:00. Lunch will be provided (10 points).

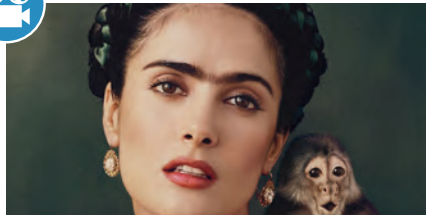
Sign up with the concierge by Saturday, July 6, to allow PB&J time to prepare lunch.



John Villaveces and Chun-Chien Chuang

Tuesday, July 2 | 3:00 p.m.
Madison Living Room

Back by popular demand: Violinist Chun-Chien Chuang, concertmaster of the Saint Joseph Symphony, has performed in the U.S., Europe, and Taiwan, including the Kennedy Center in Washington, D.C., Musikverein Golden Hall in Vienna, and the National Music Hall in Taipei. Her husband, pianist and organist John Villaveces, is a professor and collaborative pianist at the University of Central Missouri, as well as music director at St. John LaLande in Blue Springs.



Movie Classic | Robert Butler: *Frida*

Friday, July 5 | 2:00 p.m.
Westport Room

Frida is the biography of Mexican artist Frida Kahlo, who channeled the pain of a crippling injury and her stormy marriage into her work. The 2002 film features an all-star cast, including Salma Hayek in her Academy Award-nominated portrayal as Kahlo, Alfred Molina as her husband, Diego Rivera, Geoffrey Rush as Leon Trotsky, with whom Frida has an affair, Edward Norton as Nelson Rockefeller, Ashley Judd as model and activist Tina Modotti, and Antonio Banderas as artist David Alfaro Siqueiros.



Boulevard Beer Tour

Wednesday, July 10
BSP bus departs at 1:00 p.m.

Join us for a tour of Boulevard Brewing Company! The brewery, founded in 1989, has grown to become the largest specialty brewer in the Midwest. The tour is only \$5 per person, and if at least 10 residents take part, we can have a private tour. The 40-minute walking tour concludes with samples in the brewery's Tasting Room.

Sign up with the concierge.



Speaker Series | Gaylord Torrence

Thursday, July 11 | 3:00 p.m.
Westport Room

Gaylord Torrence joined the Nelson-Atkins' staff as founding curator of the Department of American Indian Art in 2002. He has built much of the institution's highly regarded Native American collection and led the creation of an expansive suite of galleries, opened in 2009. Gaylord Torrence is Professor Emeritus in Fine Arts, Drake University.



Nicholas Good | Harpsichord

Friday, July 12 | 3:00 p.m.
Chapel

BSP is delighted to welcome back the incredibly talented harpsichordist Nicholas Good. Nicholas tours with Kansas Arts on Tours, presenting concerts in local communities. In addition to concerts in Kansas, the group has performed Bach concertos in Minnesota and a program of Diderik Buxtehude's music for the Midwest Historical Keyboard Society in Iowa City. Join us!



ART BLOCKS | Donna Houtteman

Monday, July 15 | 3:00 p.m.
Westport Room

Donna Houtteman is the leading voice behind the Art Sofa Series at the Kansas City Art Institute. As a docent, Donna leads more than 50 tours per year at the Nelson-Atkins Museum of Art.



Speaker Series | Gibson Kerr

Tuesday, July 16 | 3:00 p.m.
Westport Room

Gibson (Gib) Kerr is the director of capital markets in Kansas and Missouri for international commercial real estate company Cushman & Wakefield. His major transactions include the Power & Light Building and the Flashcube Building at 720 Main. Gib will give an update on downtown development activity from the Riverfront to Crown Center and discuss the impact of the downtown streetcar, the re-emerging Troost corridor, and ways in which millennials are driving change in development patterns.



Whole Foods Market

Wednesday, July 17
BSP bus departs at 2:00 p.m.

Take advantage of some fresh summer fruit! Join us for a trip to the Whole Foods Market.

Sign up with the concierge.



Resident Photo Reveal Reception

Thursday, July 18 | 4:00 p.m.
Art Gallery

Join us in the Art Gallery for the name reveal of the photos on the gallery wall!



Sam Wisman Trio

Friday, July 19 | 3:00 p.m.
Madison Living Room

A BSP favorite returns! Jazz drummer Sam Wisman has performed with such musicians as Bobby Watson and the Kansas City Symphony. He has also worked extensively in musical theater in Kansas City.

- P** Pub
- WR** Westport Room
- 109** Apt. 109 Madison
- *** Sign up at reception desk

JULY 2019

SUNDAY	MONDAY	TUESDAY	WEDNESDAY	THURSDAY	FRIDAY	SATURDAY
* PFL = Pets For Life	1 11:00 Stretch & Strengthen CD 1:30 Puzzle Hour 3:00 July Bulletin Board CD 4:30 Men's Club P	2 11:00 Walking Club 1:30 Gin Rummy CL 3:00 John Villaveces & Chun-Chien Chuang MLR 6:15 Game Night YL	3 11:00 Stretch & Strengthen CD 1:00 PFL Jan & Badger RR 3:00 Violinist Jennifer Mitchell Patriotic Program YL	4 Independence Day OFFICES SALON BISTRO CLOSED NO SCHEDULED ACTIVITIES	5 10:30 Resident Council TR 11:00 Stretch & Strengthen CD 3:00 Red, White, & Blue Garden Party YG	6 11:00 Exercise CD 11:00 Rosary CH 1:30 PFL Al & Chuck RR 2:00 Saturday Movie CD
7 10:00 Holy Eucharist CH 2:15 Sunday Movie CD 3:00 Bingo YL	8 11:00 Stretch & Strengthen CD 1:30 Puzzle Hour 3:00 Pianist Donna Maddox YL 4:30 Men's Club P	9 9:30 Catholic Mass CH 10:00 Coffee & Donuts RR 11:00 Walking Club 1:30 Gin Rummy CL 3:30 Bingo CD 6:15 Game Night YL	10 11:00 Stretch & Strengthen CD 1:00 PFL Jan & Badger RR 3:00 Ice Cream Social CD/RR	11 11:00 Walking Club 1:30 Manicures RR 3:30 Bingo Night CD	12 11:00 Stretch & Strengthen CD 1:30 Chair Volleyball WR 3:00 Nicholas Good Harpsichord CH	13 11:00 Exercise CD 11:00 Rosary CH 1:30 PFL Al & Chuck RR 2:00 Saturday Movie CD
14 10:00 Holy Eucharist CH 2:15 Sunday Movie CD 3:00 Bingo YL	15 11:00 Stretch & Strengthen CD 1:30 Puzzle Hour 3:00 Guitarist Nick Gadbois YL 4:30 Women's Club P	16 11:00 Walking Club 1:30 Gin Rummy CL 3:30 Bingo CD 6:15 Monopoly YL	17 11:00 Stretch/Strength CD 1:00 PFL Jan & Badger RR 1:30 Prayer Group CD 3:00 Pianist Lenn Anderson YL	18 11:00 Walking Club 1:30 Baking Club TR 3:30 Bingo CD	19 11:00 Stretch & Strengthen CD 1:30 Flower Arranging CD 3:00 Sam Wisman Trio MLR	20 11:00 Exercise CD 11:00 Rosary CH 1:30 PFL Al & Chuck RR 2:00 Saturday Movie CD
21 10:00 Holy Eucharist CH 2:15 Sunday Movie CD 3:00 Bingo YL	22 11:00 Stretch & Strengthen CD 1:30 Puzzle Hour 3:00 Pianist Donna Maddox YL	23 9:30 Catholic Mass CH 11:00 Walking Club 1:30 Gin Rummy CL 3:30 Bingo CD 6:15 Game Night YL	24 11:00 Stretch/Strength CD 1:00 PFL Jan & Badger RR 1:30 Prayer Group CD 3:00 Dessert of the Month Club CD/RR	25 11:00 Walking Club 1:30 Manicures RR 3:00 Millie Edwards Duo MLR	26 11:00 Stretch/Strength CD 1:30 Chair Volleyball WR 4:30 Cocktail Hour Michael Pagan MLR	27 11:00 Exercise CD 11:00 Rosary CH 1:30 PFL Al & Chuck RR 2:00 Saturday Movie CD
28 10:00 Holy Eucharist CH 2:15 Sunday Movie CD 3:00 Bingo YL	29 11:00 Stretch & Strengthen CD 1:30 Puzzle Hour 3:00 Betse & Clarke Duo MLR	30 11:00 Walking Club 1:30 Gin Rummy CL 3:30 Bingo CD 6:15 Monopoly YL	31 11:00 Stretch/Strength CD 1:00 PFL Jan & Badger RR 1:30 Prayer Group CD 3:00 Pianist Lenn Anderson YL	<div> A Abbey CD Coventry Dining Room CDR Canterbury Dining Room CH Chapel CL Coventry Living Room </div> <div> MLR Madison Living Room RR Room to Room TR Therapy Room YD York Dining Room YG York Garden YL York Lounge </div>		

JULY 2019

SUNDAY	MONDAY	TUESDAY	WEDNESDAY	THURSDAY	FRIDAY	SATURDAY
* PFL = Pets For Life	1 10:00 Music Moves <i>YL</i> 10:30 Current News <i>YL</i> 1:30 Manicures <i>RR</i> 3:00 Patriotic Word Games <i>YL</i>	2 10:00 Music Moves <i>YL</i> 10:30 Current News <i>YL</i> 1:30 Devotions <i>YD</i> 3:00 Bingo <i>YD</i> 6:15 Game Night <i>YL</i>	3 10:00 Music Moves <i>YL</i> 10:30 Current News <i>YL</i> 1:00 PFL Jan & Badger <i>RR</i> 3:00 Violinist Jennifer Mitchell Patriotic Program <i>YL</i>	4 Independence Day OFFICES SALON BISTRO CLOSED NO SCHEDULED ACTIVITIES	5 10:00 Music Moves <i>YL</i> 10:30 Current News <i>YD</i> 1:30 Garden Club <i>YG</i> 3:00 Red, White, & Blue Garden Party <i>YG</i>	6 10:15 Music Moves <i>YL</i> 11:00 Rosary <i>CH</i> 1:30 PFL Al & Chuck <i>RR</i> 2:30 Saturday Afternoon Adventure <i>YL</i>
7 10:00 Holy Eucharist <i>CH</i> 1:30 Praise Worship <i>YD</i> 2:00 PFL Charlie the Pom <i>RR</i> 3:00 Bingo <i>YD</i>	8 10:00 Music Moves <i>YL</i> 10:30 Current News <i>YL</i> 1:30 Manicures <i>RR</i> 3:00 Pianist Donna Maddox <i>YL</i>	9 9:30 Catholic Mass <i>CH</i> 10:00 Music Moves <i>YL</i> 10:30 Current News <i>YL</i> 1:30 Devotions <i>YD</i> 3:00 Bingo <i>YD</i> 6:15 Game Night <i>YL</i>	10 10:00 Music Moves <i>YL</i> 10:30 Current News <i>YL</i> 1:00 PFL Jan & Badger <i>RR</i> 3:00 Ice Cream Cart <i>YL/RR</i>	11 10:00 Music Moves <i>YL</i> 10:30 Current News <i>YL</i> 2:30 Wheelchair Volleyball <i>YD</i>	12 10:00 Music Moves <i>YL</i> 10:30 Current News <i>YD</i> 1:30 Resident Council Meeting <i>A</i> 3:00 Nicholas Good Harpsichord <i>CH</i>	13 10:15 Music Moves <i>YL</i> 11:00 Rosary <i>CH</i> 1:30 PFL Al & Chuck <i>RR</i> 2:30 Saturday Afternoon Adventure <i>YL</i>
14 10:00 Holy Eucharist <i>CH</i> 1:30 Praise Worship <i>YD</i> 2:00 PFL Charlie the Pom <i>RR</i> 3:00 Bingo <i>YD</i>	15 10:00 Music Moves <i>YL</i> 10:30 Current News <i>YL</i> 1:30 Manicures <i>RR</i> 3:00 Guitarist Nick Gadbois <i>YD</i>	16 10:00 Music Moves <i>YL</i> 10:30 Current News <i>YL</i> 1:30 Devotions <i>YL</i> 3:00 Bingo <i>YD</i> 6:15 Monopoly <i>YL</i>	17 10:00 Music Moves <i>YL</i> 10:30 Current News <i>YL</i> 1:00 PFL Jan & Badger <i>RR</i> 3:00 Pianist Lenn Anderson <i>YL</i>	18 10:00 Music Moves <i>YL</i> 10:30 Current News <i>YL</i> 1:30 Himalayan Eugene <i>RR</i> 3:00 Wii Games <i>YL</i> 6:30 Bingo Night <i>YL</i>	19 10:00 Music Moves <i>YL</i> 10:30 Current News <i>YD</i> 1:30 Garden Club <i>YG</i> 3:00 Sam Wisman Trio <i>MLR</i>	20 10:15 Music Moves <i>YL</i> 11:00 Rosary <i>CH</i> 1:30 PFL Al & Chuck <i>RR</i> 2:30 Saturday Afternoon Adventure <i>YL</i>
21 10:00 Holy Eucharist <i>CH</i> 1:30 Praise Worship <i>YD</i> 2:00 PFL Charlie the Pom <i>RR</i> 3:00 Bingo <i>YD</i>	22 10:00 Music Moves <i>YL</i> 10:30 Current News <i>YL</i> 1:30 Manicures <i>RR</i> 3:00 Pianist Donna Maddox <i>YL</i>	23 9:30 Catholic Mass <i>CH</i> 10:00 Music Moves <i>YL</i> 10:30 Current News <i>YL</i> 1:30 Devotions <i>YD</i> 3:00 Bingo <i>YD</i> 6:15 Game Night <i>YL</i>	24 10:00 Music Moves <i>YL</i> 10:30 Current News <i>YL</i> 1:00 PFL Jan & Badger <i>RR</i> 3:00 Dessert of the Month Club <i>YL/RR</i>	25 10:00 Music Moves <i>YL</i> 10:30 Current News <i>YL</i> 3:00 Millie Edwards Duo <i>MLR</i> 6:30 Bingo Night <i>YL</i>	26 10:00 Music Moves <i>YL</i> 10:30 Current News <i>YD</i> 3:00 Wheelchair Volleyball <i>YD</i>	27 10:15 Music Moves <i>YL</i> 11:00 Rosary <i>CH</i> 1:30 PFL Al & Chuck <i>RR</i> 2:30 Saturday Afternoon Adventure <i>YL</i>
28 10:00 Holy Eucharist <i>CH</i> 1:30 Praise Worship <i>YD</i> 2:00 PFL Charlie the Pom <i>RR</i> 3:00 Bingo <i>YD</i>	29 10:00 Music Moves <i>YL</i> 10:30 Current News <i>YL</i> 1:30 Manicures <i>RR</i> 3:00 Betse & Clarke Duo <i>MLR</i>	30 10:00 Music Moves <i>YL</i> 1:30 Devotions <i>YL</i> 3:00 Bingo <i>YD</i> 6:15 Monopoly <i>YL</i>	31 10:00 Music Moves <i>YL</i> 10:30 Current News <i>YL</i> 1:00 PFL Jan & Badger <i>RR</i> 3:00 Pianist Lenn Anderson <i>YL</i>		A Abbey CD Coventry Dining Room CDR Canterbury Dining Room CH Chapel CL Coventry Living Room MLR Madison Living Room RR Room to Room TR Therapy Room YD York Dining Room YG York Garden YL York Lounge	



Movie Classic | Robert Butler: *Sounder*

Wednesday, July 24 | 2:30 p.m.
Westport Room

Sounder, the 1972 film classic starring Cicely Tyson and Paul Winfield, tells the story of a family of black sharecroppers in Louisiana in 1933, who face a serious family crisis when the husband and father is convicted of a petty crime and sent to a prison camp.



Speaker Series | Katie Gusewelle

Tuesday, July 23 | 3:00 p.m.
Westport Room

Resident Katie Gusewelle will discuss the background and contributions of her beloved husband, the treasured writer Charles Gusewelle.

Best known by his pen name C.W. Gusewelle, Charles was born July 22, 1933, in Kansas City, Kansas. After graduating from Paseo High School and Westminster College, he joined the *Kansas City Star*.

Join Katie to learn more about Charles's time as a paratrooper, reporter, columnist, and television documentarian.



Millie Edwards Duo

Thursday, July 25 | 3:00 p.m.
Madison Living Room

Vocalist Millie Edwards, occasionally introduced to audiences as "the little woman with a big voice," is well-known on the Kansas City jazz scene. Millie is equally adept at belting out cabaret, pop, blues, and jazz. Millie minored in music and majored in education at Ottawa University in Ottawa, Kansas. In Ottawa, she met the man who encouraged her to make the most of her voice: She credits legendary composer Aaron Copland, who was visiting Ottawa, for encouraging her to sing.



Betse & Clarke Duo

Monday, July 29 | 3:00 p.m.
Madison Living Room

Betse & Clarke return to BSP. Betse Ellis, daughter of BSP resident Bobbie Ellis, plays the fiddle and sings. Clarke Wyatt plays banjo and guitar. Both are classically-trained musicians who became folk music and history scholars. Betse and Clarke have a lot of fun performing, and it's catching—singing along is encouraged!

Book NOTES

Dear BSPers! It has been one year since I wrote in the *Ambassador* about issues regarding the BSP New Westport Library, which was inaugurated in April 2018. This library column will now appear quarterly, in the July, October, January, and April issues. If there are any subjects you would like me to address, please let me know.

Much has happened in a year! Residents have continued to donate books, and four new subject categories have been added: Books: Collecting, History, Language, Libraries, Etc.; Entertainment; Humor; Western Esotericism.

I will be sending out the sixth update of donations of books given to the library since January. If you have not put your email address in the directory and wish to receive this information, please send me your email address, which I will keep in confidence. This update will also include the forty+ new books I am donating in June. My contributions to the library are found in the three-ring binder on the shelf next to the sign-out binder.

Finally, I have recently donated three subscriptions to the Madison Library, all of which are in newspaper format and all of which will be renewed for years to come. They are: *The Times Literary Supplement*, *The New York Review of Books*, and *The Art-Newsaper*.

—Dr. Jeffrey Weidman

Chaplain's CORNER

You might think the Fourth of July is all about freedom, and of course, it is. It's about what freedom is and is not.

So we're free to enjoy fireworks, but if we enjoy them in violation of local regulations, there may be consequences. We're free to have a raucous party, but if we neglect to invite our neighbors and carry on too loud and too long, there may be consequences. We're free to enjoy brats, burgers, BBQ, and beer, but if we overdo, there will definitely be consequences.

In short, our freedom—to celebrate or to do anything else—is limited by concerns for the safety of others and for our own well-being. Our founding fathers had this idea in mind when they drafted the Constitution and the Bill of Rights.

Long ago, St. Paul wrote a letter in which he made the point that freedom and self-indulgence are not the same thing. True freedom, he says, is freedom for a holy purpose: doing what is right; working for the good of all.

Have fun on the Fourth. While you're at it, feel free to think about freedom: what it means to us; how we use it; and perhaps how we might use it more kindly.

For freedom Christ has set us free ... through love serve one.
(Galatians 5:1, 13)

—Chaplain Kathy Hall

Roman Catholic Mass

Father Bob | Tuesdays, July 9 & 23 | 9:30 a.m. | Chapel

The History of Christianity: From the Disciples to the Dawn of the Reformation

Tuesdays, July 2, 9, 16, 23, & 30 | 11:00 a.m. | Westport Room

We will continue this Great Courses DVD series.

Pray the Rosary

Saturdays | 11:00 a.m. | Chapel

Café Hope

Wednesday, July 17 | 11:00 a.m. | Chapel



Speaker Series | Spinning Tree Theatre

Tuesday, July 30 | 3:00 p.m.
Westport Room

Spinning Tree Theatre was founded in 2010 by Andrew and Michael Grayman-Parkhurst after their successful careers on Broadway. Spinning Tree utilizes local talent and aims to produce works that celebrate and reflect the diversity of Kansas City.



The Great Courses | Western Civilization

Wednesday, July 31
3:00 p.m. | Westport Room

Thomas F. X. Noble of the University of Notre Dame explores the foundations of Western civilization.

Thoughtful Quotes from BSP Folks

Shared by Ruth Moss:

The purpose of life is to love it, to taste experience to the utmost, to reach out eagerly and without fear for newer and richer experiences.

—Eleanor Roosevelt

HAPPY



BIRTHDAY

Lynn Thiel, July 3

Betty Adams, July 7

Nancy With, July 10

Charlotte Bliss, July 12

Jeannette Nichols, July 14

Ethel Jianas, July 15

Zanna Reeder, July 16

Dave Fiola, July 17

Lester Palmer, July 22

Phill Levi, July 23

Richard Coopersmith, July 25

Sally Chapple, July 29

Sally Kampfe, July 29

Sarah Oliver, July 29

Margie Elliott, July 31

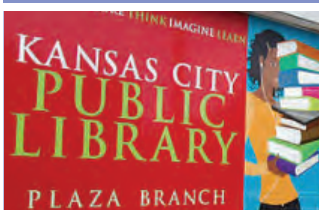
Louise Glotzbach, July 31

GOOD BOOKS

Monday, July 22 | 3:00 p.m. | Westport Room

We will discuss *Educated* by Tara Westover, available in print, electronic, and audiobook formats.

PLAZA LIBRARY



Thursday, July 25

BSP bus departs 2:45 p.m.,
returns for pickup at 4:00 p.m.

Sign up with the concierge.



Our membership has grown to 12 plus two general advisory attendees! We gained many garden lovers this year who've added knowledge and new friendships to our group. We appreciate the help and advice of all residents.

I hope residents had the opportunity to appreciate the size and beauty of the clematis vines. They grow more beautiful each year. When those beetles arrive, don't forget to capture them in a container of soapy water. They will die, and those cannot return next year. If you're squeamish, use a long, stainless steel grabbing gizmo to capture the beetles. Sterilize the gizmo after use.

Our volunteers will continue and broaden last year's water chores in the garden. Each will be responsible for watering plants in pots and the birdbath, including necessary cleaning. A recent pleasure was to watch two bird fledglings bathe while a parent patrolled along the edge of the bath, occasionally popping a food morsel into an opened beak! Some members will also deadhead spent flowers. In times of drought, we will use the hose for the rest of the garden. We hope to preserve your continued enjoyment in walks through the Memorial Garden. Take some time to observe visits of the birds and butterflies, too.

—Bobbie Ellis



Cocktail Hour

WITH PIANIST MICHAEL PAGAN

Friday, July 26, 4:30 p.m.

Madison Living Room | Canterbury Dining Room

Michael will perform while wine is served, 4:30-6:00 p.m.

Listen while you sit in the Pub, dine in the Canterbury Dining Room, or enjoy wine and cocktails in the Madison Living Room. Daily special and full dinner menu is available, also with complimentary drinks.

