

The AMBASSADOR

SAINT LUKE'S BISHOP SPENCER PLACE

April 2019



 **Saint Luke's**
BISHOP SPENCER PLACE

ACTIVITY KEY



Celebration



Movie



Theatre



Arts



Music



Nature



Excursion



Speaker



Cocktails



Dining



Coffee & Conversation



Class



Health

A few words from the CEO...



Can you smell it? Yep—it's spring! Looks like we're finally going to get more normal weather, and I don't know about you, but I can't wait to open the windows and get outside. Before you know it, the garden committee will be planning for this year's plantings and ensuring things are shipshape for the coming warm weather—how exciting!

Speaking of spring renewal, in the coming weeks you will see new signage around the campus, including a large new monument sign at the corner of Madison and 43rd Streets. We're also finishing some updates to both the Canterbury and Coventry dining rooms. We hope to have Coventry completed (new artwork and clock) before Easter and Canterbury (wallcoverings, draperies, and artwork) a little bit after that.

Please don't hesitate to stop by and say hi. My door's always open.

Dee Dunn, CEO



Watercolor Class with John Keeling

Monday, April 1

1:00–2:30 p.m. | Activity Center

Artist and illustrator John Keeling teaches watercolor on the first Monday of each month.

NOTE | Enjoy an unsupervised hour of Open Art on Mondays, April 8, 15, 22, & 29, from 1–2 p.m. in the Activity Center.



Cool Breeze Duo

Wednesday, April 3, 3:00 p.m.
Madison Living Room

With a refreshing sound that spans a variety of genres and eras, Cool Breeze performers Chuck and Vicky Adkins delight audiences with their easy-listening style. They will perform songs from the 1930s to today. See you at this fun and lively concert!



This is a monthly magazine for residents of Saint Luke's Bishop Spencer Place.

Bishop Spencer Place • 4301 Madison Ave., Kansas City, MO 64111
816-931-4277 • BishopSpencerPlace.org



Spirituality & All That Jazz

Wednesday, April 3

BSP bus departs at 6:30 p.m.

Join us at Unity Temple on the Plaza for *Spirituality & All That Jazz*, a monthly showcase of Kansas City jazz talent. This month, the talented students of the Kansas City Kansas Community College Jazz Studies Big Band and Vocal Jazz Ensemble, under the direction of Jim Mair and John Stafford, are back for an encore performance with Tim Whitmer and The Consort Band.

Sign up with the concierge.



Speaker Series | Fred Truog and Michael Sinclair: Midtown Modern

Thursday, April 4 | 3:00 p.m. | Westport Room

This presentation is a personal look by an architect and a photographer of the many fine—but underappreciated—examples of midcentury modern architecture in Midtown Kansas City.

BSP resident Fred Truog studied masters of European modern architecture as a student in France and started his architectural career at the height of midcentury modern

architecture in Kansas City. As a young architect he worked on some of the buildings in this presentation. Through his firm, Frederick S. Truog Architects, Fred designed many major area projects.

Mike Sinclair is a fine art and architectural photographer whose work is in The Nelson-Atkins Museum of Art and the Kemper Museum of Contemporary Arts.

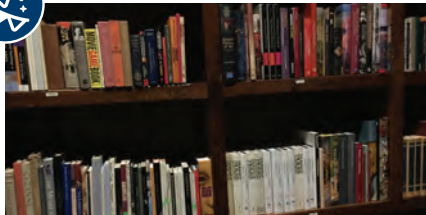


Movie Classic | Robert Butler: *Man on Wire*

Friday, April 5 | 2:00 p.m.

Westport Room

Man on Wire, an unforgettable and exhilarating 2008 British-American documentary, chronicles Philippe Petit's 1974 high-wire walk between the Twin Towers of New York's World Trade Center. The film won the Grand Jury Prize for documentary at the 2008 Sundance Film Festival.



Westport Room Library Reception

Saturday, April 6

11 a.m.–noon

Westport Room

Join us for lemonade and cookies to celebrate the one-year anniversary of our library and to show our appreciation for the kindness and generosity of resident Jeffrey Weidman, who rebuilt, reorganized, and revived our Westport Room Library.



Lunch & Learn | Brain Myths Exploded

Monday, April 8

Lunch | 11:30 a.m.–12:00 noon

Program | starts at 12:00 noon

Westport Room

We continue the Great Courses DVD series *Brain Myths Exploded*. Lunch begins promptly at 11:30. Talks begin at noon and run until 1:00. Lunch will be provided (10 points).

Sign up with the concierge by Saturday, April 6, to allow PB&J time to prepare lunch.



Saint Paul's In Harmony Choir

Tuesday, April 9 | 10:00 a.m.
Madison Living Room

One of our favorite local student choirs returns to BSP! We're always charmed by the melodies of the Saint Paul's Episcopal Day School In Harmony Choir. Afterward the students will mingle and visit with BSP residents.



Whole Foods Market

Wednesday, April 10
BSP bus departs at 2:00 p.m.

We had so much fun in October, we're going to do it again! Join us for a trip to the Whole Foods Market in Brookside. The store opened last May and features fresh produce from farms in Missouri and Kansas, local wines and spirits, delicious meals and local brews in the Fountain Room, barista-crafted coffee, tea, chai, and espresso drinks in the Allegro Coffee Bar, and chocolate-covered cheesecake bites in flavors such as coconut, key lime, and strawberry. Don't miss out on the fun!

Sign up with the concierge.



Speaker Series | Barbara McCool and Monty Brown

Thursday, April 11
3:00 p.m. | Westport Room

BSP residents and married couple Barbara McCool and Monty Brown will share insights from their upcoming book on active aging, a daily process of choosing to optimize opportunities to improve your health and the quality of your life. Join us for a discussion of Barbara's and Monty's advice, including maintaining good eating habits and regular exercise, keeping the mind active, and staying active in the community.



ART BLOCKS | Donna Houtteman

Monday, April 15 | 3:00 p.m.
Westport Room

Donna Houtteman is the leading voice behind the Art Sofa Series at the Kansas City Art Institute. Although she doesn't call herself an art historian, her passion for art and the history in which it was made is contagious. This month, Abstract Expressionism continues with DeKooning through Rothko.



Lawrence Figg and Anne-Marie Brown Duo

Wednesday, April 17 | 2:00 p.m.
Madison Living Room

Lawrence Figg and Anne-Marie Brown are members of the Kansas City Symphony, displaying artistry in cello and violin, respectively—and also in their personal lives, as they're married. The *Kansas City Star* has said Lawrence plays with "beautiful tone and a passionate, singing musicianship." The *Miami Herald* has described Anne-Marie's playing as having "silky, suave tone and unaffected beauty."



Mary Holzhausen Trio

Friday, April 12 | 3:00 p.m.
Madison Living Room

Mary Holzhausen and her flute, piano, and clarinet trio return to BSP. Dr. Mary Holzhausen is principal flutist in the Kansas City Civic Orchestra and the Kinnor Philharmonic of Kansas City and a member of several chamber ensembles.

APRIL 2019

SUNDAY	MONDAY	TUESDAY	WEDNESDAY	THURSDAY	FRIDAY	SATURDAY
* PFL = Pets For Life	April Fools' Day 1 11:00 Stretch & Strengthen <i>CD</i> 1:30 Puzzle Hour 2:00 Movie Matinee <i>CD</i> 4:30 Men's Club <i>P</i>	Election Day 2 10:00 Coffee & Donuts <i>RR</i> 11:00 Walking Club 1:30 Gin Rummy <i>CL</i> 3:30 Bingo <i>CD</i> 6:15 Game Night <i>YL</i>	3 11:00 Stretch & Strengthen <i>CD</i> 1:00 PFL Jan & Badger <i>RR</i> 3:00 Cool Breeze Duo <i>MLR</i>	4 11:00 Walking Club 1:30 PFL Erin & Jay <i>RR</i> 3:30 Bingo <i>CD</i>	5 11:00 Stretch & Strengthen <i>CD</i> 2:30 Spring Easter Craft <i>CD</i>	6 11:00 Exercise <i>CD</i> 11:00 Rosary <i>CH</i> 1:30 PFL Al & Chuck <i>RR</i> 2:00 Saturday Movie <i>CD</i>
7 10:00 Holy Eucharist <i>CH</i> 2:15 Sunday Movie <i>CD</i> 3:00 Bingo <i>YL</i>	8 11:00 Stretch & Strengthen <i>CD</i> 1:30 Puzzle Hour 3:00 Pianist Donna Maddox <i>YL</i> 4:30 Women's Club <i>P</i>	9 9:30 Catholic Mass <i>CH</i> 10:00 St. Paul's Choir <i>MLR</i> 11:00 Walking Club 1:30 Gin Rummy <i>CL</i> 3:30 Bingo <i>CD</i> 6:15 Game Night <i>YL</i>	10 11:00 Stretch & Strengthen <i>CD</i> 1:00 PFL Jan & Badger <i>RR</i> 3:00 Pianist Lenn Anderson <i>YL</i>	11 11:00 Walking Club 2:00 Dessert of the Month <i>RR</i> 3:30 Bingo <i>CD</i>	12 10:30 Resident Council <i>TR</i> 11:00 Stretch & Strengthen <i>CD</i> 1:30 Chair Volleyball <i>WR</i> 3:00 Mary Holzhausen Trio <i>MLR</i>	13 11:00 Exercise <i>CD</i> 11:00 Rosary <i>CH</i> 1:30 PFL Al & Chuck <i>RR</i> 2:00 Saturday Movie <i>CD</i>
Palm Sunday 14 10:00 Holy Eucharist <i>CH</i> 2:15 Sunday Movie <i>CD</i> 3:00 Bingo <i>YL</i>	15 11:00 Stretch & Strengthen <i>CD</i> 1:30 Puzzle Hour 3:00 Guitarist Nick Gadbois <i>YL</i>	16 11:00 Walking Club 1:30 Gin Rummy <i>CL</i> 3:30 Bingo <i>CD</i> 6:15 Monopoly <i>YL</i>	17 11:00 Stretch/Strength <i>CD</i> 1:00 PFL Jan & Badger <i>RR</i> 1:30 Prayer Group <i>CD</i> 2:00 Figg & Brown <i>MLR</i> 3:00 Stations of the Cross <i>CH</i>	18 11:00 Walking Club 1:30 PFL Erin & Jay <i>RR</i> 3:00 Maundy Thursday Service <i>CH</i>	Good Friday 19 11:00 Stretch & Strengthen <i>CD</i> 1:30 Guitarist Braulio Bosi <i>MLR</i> 3:00 Good Friday Services <i>CH</i>	Passover 20 11:00 Exercise <i>CD</i> 11:00 Rosary <i>CH</i> 1:30 PFL Al & Chuck <i>RR</i> 2:00 Saturday Movie <i>CD</i>
Easter 21 10:00 Holy Eucharist <i>CH</i> 2:30 Easter Social <i>YL</i> 3:00 Bingo <i>YL</i>	Earth Day 22 11:00 Stretch & Strengthen <i>CD</i> 1:30 Puzzle Hour 3:00 Pianist Donna Maddox <i>YL</i>	23 9:30 Catholic Mass <i>CH</i> 11:00 Walking Club 1:30 Gin Rummy <i>CL</i> 3:30 Bingo <i>CD</i> 6:15 Game Night <i>YL</i>	24 10:30 Prayer Group <i>CD</i> 11:00 Stretch & Strengthen <i>CD</i> 1:00 PFL Jan & Badger <i>RR</i> 1:30 Chansonettes <i>MLR</i> 3:00 Lenn Anderson <i>YL</i>	25 11:00 Walking Club 1:30 Baking Club <i>TR</i> 4:00 Harmony KC Chamber Music Students <i>MLR</i>	Arbor Day 26 11:00 Stretch & Strengthen <i>CD</i> 1:30 Chair Volleyball <i>WR</i> 4:30 Cocktail Hour: Pianist Michael Pagan <i>MLR</i>	27 11:00 Exercise <i>CD</i> 11:00 Rosary <i>CH</i> 1:30 PFL Al & Chuck <i>RR</i> 2:00 KC Young Audiences <i>MLR</i>
28 10:00 Holy Eucharist <i>CH</i> 2:15 Sunday Movie <i>CD</i> 3:00 Bingo <i>YL</i>	29 11:00 Stretch & Strengthen <i>CD</i> 1:30 Puzzle Hour 3:00 The Elena Talley Trio <i>MLR</i>	30 11:00 Walking Club 1:30 Gin Rummy <i>CL</i> 3:30 Bingo <i>CD</i> 6:15 Monopoly <i>YL</i>			<div> <div> A Abbey CD Coventry Dining Room CDR Canterbury Dining Room CH Chapel CL Coventry Living Room </div> <div> MLR Madison Living Room RR Room to Room TR Therapy Room YD York Dining Room YG York Garden YL York Lounge </div> </div>	

APRIL 2019

SUNDAY	MONDAY	TUESDAY	WEDNESDAY	THURSDAY	FRIDAY	SATURDAY
* PFL = Pets For Life	April Fools' Day 1 10:00 Music Moves <i>YL</i> 10:30 Current News <i>YL</i> 1:30 Manicures <i>RR</i> 2:30 Indoor Gardening Grass Baskets <i>YL</i>	Election Day 2 10:00 Music Moves <i>YL</i> 10:30 Current News <i>YL</i> 1:30 Devotions <i>YD</i> 3:00 Bingo <i>YD</i> 6:15 Game Night <i>YL</i>	3 10:00 Music Moves <i>YL</i> 10:30 Current News <i>YL</i> 1:00 PFL Jan & Badger <i>RR</i> 3:00 Cool Breeze Duo <i>MLR</i>	4 10:00 Music Moves <i>YL</i> 10:30 Resident Council Meeting <i>A</i> 2:30 Spring Tea Time <i>YL</i> 6:30 Bingo Night <i>YL</i>	5 10:00 Music Moves <i>YL</i> 10:30 Current News <i>YL</i> 1:00 Movie Matinee <i>YL</i> 2:30 Easter Crafts <i>YD</i>	6 10:15 Music Moves <i>YL</i> 11:00 Rosary <i>CH</i> 1:30 PFL Al & Chuck <i>RR</i> 2:30 Saturday Afternoon Adventure <i>YL</i>
7 10:00 Holy Eucharist <i>CH</i> 2:00 PFL Charlie the Pom <i>RR</i> 3:00 Bingo <i>YD</i>	8 10:00 Music Moves <i>YL</i> 10:30 Current News <i>YL</i> 1:30 Manicures <i>RR</i> 3:00 Pianist Donna Maddox <i>YL</i>	9 9:30 Catholic Mass <i>CH</i> 10:00 St. Paul's Choir <i>MLR</i> 1:30 Devotions <i>YD</i> 3:00 Bingo <i>YD</i> 6:15 Game Night <i>YL</i>	10 10:00 Music Moves <i>YL</i> 10:30 Current News <i>YL</i> 1:00 PFL Jan & Badger <i>RR</i> 3:00 Pianist Lenn Anderson <i>YL</i>	11 10:00 Music Moves <i>YL</i> 10:30 Current News <i>YL</i> 2:00 Dessert of the Month <i>YL/RR</i> 6:30 Bingo Night <i>YL</i>	12 10:00 Music Moves <i>YL</i> 10:30 Current News <i>YL</i> 1:00 Movie Matinee <i>YL</i> 3:00 Mary Holzhausen Trio <i>MLR</i>	13 10:15 Music Moves <i>YL</i> 11:00 Rosary <i>CH</i> 1:30 PFL Al & Chuck <i>RR</i> 2:30 Saturday Afternoon Adventure <i>YL</i>
Palm Sunday 14 10:00 Holy Eucharist <i>CH</i> 1:30 Praise & Worship <i>YD</i> 3:00 Bingo <i>YD</i>	15 10:00 Music Moves <i>YL</i> 10:30 Current News <i>YL</i> 1:30 Manicures <i>RR</i> 3:00 Guitarist Nick Gadbois <i>YD</i>	16 10:00 Music Moves <i>YL</i> 10:30 Current News <i>YL</i> 1:30 Devotions <i>YL</i> 3:00 Bingo <i>YD</i> 6:15 Game Night <i>YL</i>	17 10:00 Music Moves <i>YL</i> 10:30 Current News <i>YL</i> 1:00 PFL Jan & Badger <i>RR</i> 2:00 Figg & Brown <i>MLR</i> 3:00 Stations of the Cross <i>CH</i>	18 10:00 Music Moves <i>YL</i> 10:30 Current News <i>YL</i> 1:30 Himalayan Eugene <i>RR</i> 3:00 Maundy Thursday <i>CH</i> 6:30 Bingo Night <i>YL</i>	Good Friday 19 10:00 Music Moves <i>YL</i> 10:30 Current News <i>YL</i> 1:30 Guitarist Braulio Bosi <i>MLR</i> 3:00 Good Friday Services <i>CH</i>	Passover 20 10:15 Music Moves <i>YL</i> 11:00 Rosary <i>CH</i> 1:30 PFL Al & Chuck <i>RR</i> 2:30 Saturday Afternoon Adventure <i>YL</i>
Easter 21 10:00 Holy Eucharist <i>CH</i> 1:30 Praise & Worship <i>YD</i> 2:00 PFL Charlie the Pom <i>RR</i> 2:30 Easter Social <i>YD</i> 3:00 Bingo <i>YD</i>	Earth Day 22 10:00 Music Moves <i>YL</i> 10:30 Current News <i>YL</i> 1:30 Manicures <i>RR</i> 3:00 Pianist Donna Maddox <i>YL</i>	23 9:30 Catholic Mass <i>CH</i> 10:00 Music Moves <i>YL</i> 10:30 Current News <i>YL</i> 1:30 Devotions <i>YD</i> 3:00 Bingo <i>YD</i> 6:15 Game Night <i>YL</i>	24 10:00 Music Moves <i>YL</i> 10:30 Current News <i>YL</i> 1:00 PFL Jan & Badger <i>RR</i> 1:30 Chansonettes <i>MLR</i> 3:00 Pianist Lenn Anderson <i>YL</i>	25 10:00 Music Moves <i>YL</i> 10:30 Current News <i>YL</i> 3:00 Wii Games <i>YL</i> 4:00 Harmony KC Students <i>MLR</i> 6:30 Bingo Night <i>YL</i>	Arbor Day 26 10:00 Music Moves <i>YL</i> 10:30 Current News <i>YD</i> 2:30 Spring Happy Hour <i>YL</i>	27 10:15 Music Moves <i>YL</i> 11:00 Rosary <i>CH</i> 1:30 PFL Al & Chuck <i>RR</i> 2:00 KC Young Audiences <i>MLR</i>
28 10:00 Holy Eucharist <i>CH</i> 1:30 Praise & Worship <i>YD</i> 2:00 PFL Charlie the Pom <i>RR</i>	29 10:00 Music Moves <i>YL</i> 10:30 Current News <i>YL</i> 1:30 Manicures <i>RR</i> 3:00 The Elena Talley Trio <i>MLR</i>	30 10:00 Music Moves <i>YL</i> 10:30 Current News <i>YL</i> 1:30 Devotions <i>YL</i> 3:00 Bingo <i>YD</i> 6:15 Game Night <i>YL</i>			A Abbey CD Coventry Dining Room CDR Canterbury Dining Room CH Chapel CL Coventry Living Room MLR Madison Living Room RR Room to Room TR Therapy Room YD York Dining Room YG York Garden YL York Lounge	



Speaker Series | Dave Helling

Tuesday, April 16 | 3:00 p.m.
Westport Room

Dave Helling, opinion columnist and editorial board member at the *Kansas City Star*, has spent nearly 40 years covering politics in the Midwest and the Kansas City region. After reporting stints in Nebraska and Wichita in the late 1970s, Helling opened a Washington bureau for Kansas television stations in 1981. His first assignment: Cover Ronald Reagan's first inauguration.

Helling returned to his hometown, Kansas City, in 1984. He covered politics for WDAF-TV, then anchored the news for WDAF and KCTV. He left television in 2005, joining the *Star* to help establish the newspaper's video presence on the internet, as well as write stories and columns for the printed paper. He's a familiar face and voice on area television and radio stations, as well as on national cable news. He appears regularly on "Kansas City Week in Review" on KCPT.

In 2016, Helling was named best Missouri columnist by the Missouri Press Association.

**Saturdays, April 13, 20, & 27
11:00 a.m.-noon**

Dr. Weidman will be available in the Westport Library.



Guitarist Bráulio Bosi

Friday, April 19 | 1:30 p.m.
Madison Living Room

Bráulio Bosi is Adjunct Instructor in Guitar at the UMKC Conservatory of Music. Born in Colatina, Espirito Santo, Brazil, he started playing the guitar at age 13. Bráulio has won multiple competitions and performed in many venues throughout Brazil and the United States.



Speaker Series | Reverend Jerry Kolb— *On My Way to Ministry: 50 Years as a Priest*

Tuesday, April 23 | 3:00 p.m.
Westport Room

We're pleased to welcome a long-time BSP friend, Reverend Jerry Kolb, who served as Chaplain at Saint Luke's Hospital for 28 years. Reverend Kolb graduated from the University of Colorado and Seabury Western Theological Seminary. He spent more than seven years in the U.S. Army Corps of Engineers and was an army aviator, flying fixed and rotary winged aircraft. He tells people he built bridges and blew them up, flew airplanes, and jumped out of them!



Shawnee Mission East Women's Choir: The Chansonettes

Wednesday, April 24
1:30-2:00 p.m.
Madison Living Room

Enjoy a performance by the renowned Shawnee Mission East High School Chansonettes, the school's women's choir, under the direction of Ken Foley, who has been the SME Director of Choirs for more than 10 years. The Shawnee Mission East Choir group has almost 400 students involved in their five choirs.



The Great Courses | Foundations of Western Civilization

Wednesday, April 24
3:00 p.m. | Westport Room

In these lectures, award-winning scholar and teacher Thomas F. X. Noble of the University of Notre Dame explores the vast and rich territory of Western civilization, from its humble beginnings in the great river valleys of Iraq and Egypt to the dawn of the modern world.

Chaplain's CORNER

NEWSFLASH: April Fools' Day falls on April 2nd this year—mark your calendars! Okay, maybe no one will buy that, but there have been some pretty convincing April Fools' pranks over the years. In 1957, for example, a BBC broadcast about that year's spaghetti tree harvest in Switzerland resulted in hundreds of calls from people who wanted to know where they could buy their own spaghetti trees. So when April Fools' Day rolls around on the 2nd this year, keep your eyes open!

There's much more to April than April Fools' Day, or April 15th. I'm thinking of an old Simon and Garfunkel song—*April, Come She Will*—which beautifully expresses a certainty that we cling to in the winter, especially this past winter! April, come she will, bringing showers and May flowers that warm our hearts, renew our spirits and delight our senses.

And, of course, the holy days of Easter and Passover take place during the month of April this year, reminding us that all our times are in God's hands.

April brings us a bit of foolishness, a breath of spring, and 30 days to give thanks for it all!

To everything there is a season, and a time for every purpose under heaven. (Ecclesiastes 3:1)

—Chaplain Kathy Hall

Roman Catholic Mass

Father Bob | Tuesdays, April 9 & 23 | 9:30 a.m. | Chapel

Lent Studies

Tuesday, April 2 | 11:00 a.m. | Jefferson Living Room

Tuesdays, April 9 & 16 | 11:00 a.m. | Westport Room

We will continue our DVD program, *Embracing an Alternative Orthodoxy*, with presentations by Richard Rohr concerning aspects of our Christian faith. You don't need to bring anything—just yourself!

Pray the Rosary

Saturdays | 11:00 a.m. | Chapel

Café Hope

Wednesday, April 17 | 11:00 a.m. | Chapel



Harmony KC Players

Thursday, April 25 | 4:00 p.m.
Madison Living Room

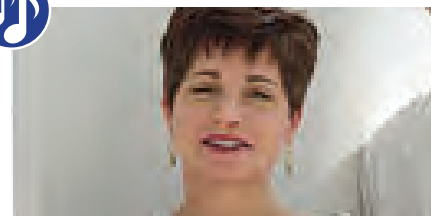
Harmony KC's most advanced students will present a new music repertoire. Harmony KC was supported for many years by Judge Charles Shangler.



Kansas City Young Audiences

Saturday, April 27 | 2:00 p.m.
Madison Living Room

Kansas City Young Audiences provides children in KC schools an opportunity to see and hear classical music. Join us for a delightful KCYA performance.



Elena Talley Trio

Monday, April 29 | 3:00 p.m.
Madison Living Room

Join us for a flute, clarinet, and bassoon recital, generously presented through KC Symphony's Community Connections.

HAPPY



BIRTHDAY

Clark Achelpohl, April 1
Dottie Tate, April 1
Ann Hovey, April 3
Vicki Johnson, April 10
John Henke, April 13
Bert Bates, April 14
Sylvia Billington, April 14
Maya Coopersmith, April 19
Henry Tharp, April 23
Robert Heyer, April 26

IN LOVING MEMORY



Pat Smith

Thoughtful Quotes from BSP Folks

Shared by Ann Atkin:

As you get older, you really just want to be surrounded by good people. People that are good for you, good to you, and good for your soul.

—author unknown

Holy Week & Easter Schedule

Palm Sunday | Sunday, April 14 | 10:00 a.m.
Stations of the Cross | Wednesday, April 17 | 3:00 p.m.
Maundy Thursday | Thursday, April 18 | 3:00 p.m.
Good Friday | Friday, April 19 | 3:00 p.m.
Easter | Sunday, April 21 | 10:00 a.m.



Enough, already! We're all very aware that poems advise April showers bring May flowers. But didn't we get more than our share of rainstorms, river flooding, maybe some snow (oh, my!), and basically hurricane-strength winds in March? April may be looking like another weather aberration if there is any truth in that old poem. A prequel to that saying can be found in Chaucer's *The Canterbury Tales*.

We have been subjected to atypical weather for months now. The various roots in our gardens have

had their share of moisture, and they should happily concentrate on sending forth their promises of nature's glory. A good dose of sunshine is all we will hope for this month. Keep your fingers crossed; people have been doing this for centuries. Couldn't hurt!



—Bobbie Ellis

GOOD BOOKS

Monday, April 22 | 3:00 p.m.
Westport Room

Last month we discussed the book. This month we'll view the film version of *The Guernsey Literary and Potato Peel Pie Society*. Please join us!



Cocktail Hour

WITH PIANIST MICHAEL PAGAN

Friday, April 26, 4:30 p.m.

Madison Living Room | Canterbury Dining Room

Michael will perform while wine is served, 4:30-6:00 p.m.

Listen while you sit in the Pub, dine in the Canterbury Dining Room, or enjoy wine and cocktails in the Madison Living Room. Daily special and full dinner menu is available, also with complimentary drinks.

