



# *The* AMBASSADOR

SAINT LUKE'S BISHOP SPENCER PLACE

September 2018

 **Saint Luke's**  
BISHOP SPENCER PLACE



## ACTIVITY KEY



Celebration



Movie



Theatre



Arts



Music



Nature



Excursion



Speaker



Cocktails



Dining



Coffee &  
Conversation



Class



### Speaker Series | Craig Volland

Tuesday, September 4

3:00 p.m. | Westport Room

Craig Volland, a graduate of Duke University and the University of Chicago, worked 14 years in water treatment. In the late 1980s, he began to apply his technical skills to major environmental issues.

Craig was a co-founder of Citizens for Recycling and the Kansas City Food Circle. He organized the first Eat Local and Organic Farmers Expo in the KC metro.

In 1994, Craig became active in the Kansas Chapter of the Sierra Club. In 1996, he helped citizens in western Kansas fight a major expansion of concentrated hog feeding operations. He testified in many of these permit proceedings. He also developed local regulations on hog confinements for the city of Alma, Nebraska, and Norton County, Kansas. Craig continues to advocate for local organic and free-range food production systems.



### Johnny Carson Classics

Wednesday, September 5

3:00 p.m. | Westport Room

Come join the group for laughs and memories as we continue to relive the best moments of *The Tonight Show Starring Johnny Carson* from the DVD collection that compiles some of his funniest interviews, best performances, most popular guests, and the final two shows of his long-running series.

## Labor Day

**REMINDER | Labor Day is Monday, September 3.**

The Bishop Spencer Place office, as well as the Salon and Bistro, will be closed.

They will open again on Tuesday, September 4.

Enjoy the holiday!

**NOTE | Catholic Mass has moved from Wednesday to Tuesday mornings:**

**Tuesday, September 11**

**Tuesday, September 25**

**9:30 a.m. | Chapel**



This is a monthly magazine for residents of Saint Luke's Bishop Spencer Place.

**Bishop Spencer Place** ♦ 4301 Madison Ave., Kansas City, MO 64111  
816-931-4277 ♦ [BishopSpencerPlace.org](http://BishopSpencerPlace.org)



## Speaker Series | Lindsay Davis

Thursday, September 6  
3:00 p.m. | Westport Room

Lindsay Davis came to UMKC to teach costume design and costume technology after a successful 30-year career in New York. During those 30 years, he designed for 13 Academy Award-winning actors and designed the Tony Award Best Musical, *The Mystery of Edwin Drood*.

For many years, Professor Davis owned and operated a highly successful commercial costume shop, winning design awards in New York, Chicago, Los Angeles, San Francisco, Washington D.C., and Florida. He has designed for opera in Europe, musicals in Japan and Korea, and multiple shows in London's West End.

Professor Davis has worked professionally at the Cleveland Playhouse, Kansas City Repertory Theatre, Radio City Music Hall, Arena Stage, Actors Theatre of Louisville, Chicago's Goodman Theatre, Los Angeles Opera, New York City Opera, and the Metropolitan Opera.



## Spirituality & All That Jazz

Wednesday, September 5  
BSP bus departs at 6:30 p.m.

Join us at Unity Temple for *Spirituality & All That Jazz*, hosted by Tim Whitmer. This month, enjoy BSP favorite and piano maestro Joe Cartwright, performing with Tim Whitmer and The Consort Band.

Sign up with the concierge.



## Movie Classic | Fly Away Home

Friday, September 7, 2:00 p.m.  
Westport Room

*Fly Away Home*, a 1996 family comedy-drama starring Anna Paquin, Jeff Daniels, and Dana Delany, dramatizes the actual experiences of Bill Lishman who trained Canada geese to follow his ultralight aircraft and succeeded in leading their migration in 1993 through his program "Operation Migration."



## Pianist Po Sim Head

Monday, September 10  
3:00 p.m.  
Madison Living Room

Born in Hong Kong, Po Sim (Fanny) Head completed her undergraduate degree of music composition before coming to the United States for her master's degree in piano performance and musicology. She attended the Juillard School of Dance and Music and has performed with cellist Julian Schwarz in the recital of pianoSonoma workshop. She has received the Woman Grant Fellowship twice.

Fanny is currently a member of Trio Spiritus with saxophonists Zak Pischnotte and Nicolas Lira.

Fanny's husband, guitarist Ryan Head, will be here in October!

## THANK YOU!

We want to give a huge BSP thank you to **Bernie Jones** for his time and expertise organizing the CD collection.

The collection is now located in the Westport Library and available for check out.

## PLEASE NOTE

### Lunch and Bridge Mixer

Monday, September 10 | 12:00 p.m.  
Make your reservation with the Madison concierge at 595-5877.

**NOTE** | Dr. Weidman will be available in the Westport Library on Saturdays this month from **11:00 a.m. to noon.**



## Pianist Dorothy Brandwein

Tuesday, September 11  
2:00 p.m.  
Madison Living Room

Resident Bernadette Miller tipped us off to the incredible talents of Dorothy Brandwein last fall, and she returns to BSP to this month. Dorothy is a pianist, piano instructor, and music director at the Church of the Ascension in Overland Park.



## Speaker Series | Tabitha Schmidt

Thursday, September 13  
3:00 p.m. | Westport Room

Tabitha Schmidt joined Powell Gardens in the summer of 2016 as CEO and President. She has extensive background in non-profits and educational institutions, having held positions at the Jewish Community Center, the Museum of Texas Tech University, the Kansas City Art Institute, and the Nelson-Atkins Museum of Art. Tabitha earned a B.A. in Art from Baker University and an M.A. in Art History from UMKC.



## ART BLOCKS | Donna Houtteman

Monday, September 17  
3:00 p.m. | Westport Room

Donna Houtteman, a docent at the Nelson-Atkins Museum of Art, is the leading voice behind the Kansas City Art Institute's Art Sofa Series, a class for anyone who has felt like an outsider to the art world but would really like to gain a basic understanding of key artists, movements, and ideas.



## Lunch & Learn | Turning Points in Middle Eastern History

Wednesday, September 12  
Lunch | 11:30 a.m.–12:00 noon  
Program | starts at 12:00 noon  
Westport Room

Join us for the **final** 30-minute talks from the Great Courses DVD series *Turning Points in Middle Eastern History*. Lunch begins promptly at 11:30 with the two talks beginning at noon and running until 1:00. Lunch will be provided (for 10 points).

**Sign up with the concierge by Monday, September 10, to reserve your lunch and allow PB&J time to prepare.**



## Michael O'Shiver | Harp and Piano

Friday, September 14, 3:00 p.m.  
Madison Living Room

Renowned harpist Michael O'Shiver blends the music of Kansas City jazz classics with his years of performing throughout the Caribbean and America. He has performed, recorded, and/or produced for Bob Hope, Dizzy Gillespie, Dave Brubeck, Dr. Carol McLaughlin, Bloodstone, Lil Rev, Richie Cole, and High Vibe Music.



## Speaker Series | Quinton Lucas

Tuesday, September 18  
3:00 p.m. | Westport Room

Kansas City Councilman and mayoral candidate Quinton Lucas is an attorney and at-large representative for the 3rd District. He has pledged to focus on accountability at City Hall and a greater quality of life for the city's poor. Lucas said his vision of public service was forged by the struggles of his single mother, "who had no money but a lot of faith" and got him and his two sisters through college.



SUNDAY	MONDAY	TUESDAY	WEDNESDAY	THURSDAY	FRIDAY	SATURDAY
						<div>1</div> <div>9:30 Grocery Store Trip *</div> <div>11-12 Librarian Hours WR</div> <div>7:00 Movie JLR</div>
<div>2</div> <div>10:00 Holy Eucharist CH</div> <div>11-1 Brunch CDR</div> <div>3:30 Movie JLR</div>	<div>3</div> <div>Labor Day</div> <div>OFFICES   SALON   BISTRO CLOSED</div> <div>No scheduled activities.</div>	<div>4</div> <div>10:00 Strength &amp; Balance AC</div> <div>11:00 Bible Study WR</div> <div>1:00 Blood Pressure Check 109</div> <div>1:30 Arthritis Exercise AC</div> <div>2:30 Alterations A</div> <div>3:00 Speaker Series   Craig Volland WR</div>	<div>5</div> <div>10:00 Stretch AC</div> <div>10:30 Grocery Store Trip *</div> <div>1:00 Tai Chi AC</div> <div>3:00 Best of Johnny Carson WR</div> <div>6:30 Bus Departs for Spirituality &amp; All That Jazz *</div>	<div>6</div> <div>10:00 Strength &amp; Balance AC</div> <div>1:30 Arthritis Exercise AC</div> <div>2-4 CC Bank MLR</div> <div>2:00 Life Enrichment Committee P</div> <div>2:30 Dining Committee A</div> <div>3:00 Speaker Series   Lindsay Davis WR</div>	<div>7</div> <div>Chiefs Red Friday</div> <div>10:00 Stretch AC</div> <div>2:00 Movie Classic with Robert Butler   Fly Away Home WR</div>	<div>8</div> <div>9:30 Grocery Store Trip *</div> <div>11-12 Librarian Hours WR</div> <div>7:00 Movie JLR</div>
<div>9</div> <div>10:00 Holy Eucharist CH</div> <div>11-1 Brunch CDR</div> <div>3:00 Movie JLR</div>	<div>10</div> <div>9:30 Tai Chi AC</div> <div>10:30 Stretch AC</div> <div>11:00 Welcome Committee A</div> <div>12:00 Lunch &amp; Bridge Mixer CDR * sign up with Madison Desk</div> <div>1:00 Art Class AC</div> <div>1:30 Dollar Tree Trip *</div> <div>3:00 Pianist Po Sim Head MLR</div> <div>4:30 Men's Club P</div>	<div>11</div> <div>9:30 Catholic Mass CH</div> <div>10:00 Strength &amp; Balance AC</div> <div>11:00 Bible Study WR</div> <div>1:00 Blood Pressure Check 109</div> <div>1:30 Arthritis Exercise AC</div> <div>2:00 Dorothy Brandwein MLR</div> <div>3:30 Resident Council A</div>	<div>12</div> <div>10:00 Stretch AC</div> <div>10:30 Grocery Store Trip *</div> <div>11:30 Lunch &amp; Learn   Middle Eastern History WR * final lecture in the series</div> <div>1:30 Tai Chi AC</div>	<div>13</div> <div>10:00 Strength &amp; Balance AC</div> <div>1:30 Arthritis Exercise AC</div> <div>2-4 CC Bank MLR</div> <div>3:00 Speaker Series   Tabitha Schmidt WR</div>	<div>14</div> <div>10:00 Stretch AC</div> <div>1:30 Chair Volleyball WR</div> <div>3:00 Michael O'Shiver   Harp and Piano MLR</div>	<div>15</div> <div>9:30 Grocery Store Trip *</div> <div>11-12 Librarian Hours WR</div> <div>7:00 Movie JLR</div>
<div>16</div> <div>10:00 Holy Eucharist CH</div> <div>11-1 Brunch CDR</div> <div>3:00 Movie JLR</div>	<div>17</div> <div>9:30 Tai Chi AC</div> <div>10:30 Stretch AC</div> <div>1:00 Art Class AC</div> <div>1:30 Target Trip *</div> <div>3:00 Art Blocks   Donna Houtteman WR</div> <div>4:30 Ladies' Club P</div>	<div>18</div> <div>10:00 Strength &amp; Balance AC</div> <div>11:00 Bible Study WR</div> <div>1:00 Blood Pressure Check 109</div> <div>1:30 Arthritis Exercise AC</div> <div>3:00 Speaker Series   Quinton Lucas WR</div>	<div>19</div> <div>10:00 Stretch AC</div> <div>10:30 Grocery Store Trip *</div> <div>11:00 Café Hope CH</div> <div>1:00 Tai Chi AC</div> <div>3:00 Guitarist Braulio Bosi MLR</div>	<div>20</div> <div>10:00 Strength &amp; Balance AC</div> <div>11:00 Friendly Neighbor Committee WR</div> <div>1:30 Arthritis Exercise AC</div> <div>2-4 CC Bank MLR</div> <div>3:00 Speaker Series   Cathy Beaham Smith WR</div>	<div>21</div> <div>10:00 Stretch AC</div> <div>3:00 Pianist Tim Whitmer MLR</div>	<div>22</div> <div>First Day of Fall</div> <div>9:30 Grocery Store Trip *</div> <div>11-12 Librarian Hours WR</div> <div>7:00 Movie JLR</div>
<div>23</div> <div>10:00 Holy Eucharist CH</div> <div>11-1 Brunch CDR</div> <div>3:00 Movie JLR</div>	<div>24</div> <div>9:30 Tai Chi AC</div> <div>10:30 Stretch AC</div> <div>10:30 Women's Coffee B</div> <div>1:00 Art Class AC</div> <div>2:00 Garden Committee A</div> <div>3:00 Good Book Reading Group WR</div>	<div>25</div> <div>9:30 Catholic Mass CH</div> <div>10:00 Strength &amp; Balance AC</div> <div>11:00 Bible Study WR</div> <div>1:00 Blood Pressure Check 109</div> <div>1:30 Arthritis Exercise AC</div> <div>3:00 Speaker Series   Mary Sanchez WR</div>	<div>26</div> <div>10:00 Stretch AC</div> <div>10:30 Grocery Store Trip *</div> <div>1:00 Tai Chi AC</div> <div>3:00 Great Courses   From Monet to Van Gogh WR</div>	<div>27</div> <div>10:00 Strength &amp; Balance AC</div> <div>1:30 Arthritis Exercise AC</div> <div>2-4 CC Bank MLR</div> <div>2:45 Bus Departs for Plaza Library Pick up at 4:00 *</div>	<div>28</div> <div>9-11 Free Fall Risk &amp; Prevention Screening WR</div> <div>10:00 Stretch AC</div> <div>1:30 Chair Volleyball WR</div> <div>4:30 Cocktail Hour with Pianist Rich Hill MLR</div>	<div>29</div> <div>9:30 Grocery Store Trip *</div> <div>11-12 Librarian Hours WR</div> <div>7:00 Movie JLR</div>
<div>30</div> <div>10:00 Holy Eucharist CH</div> <div>11-1 Brunch CDR</div> <div>3:00 Movie JLR</div>				<div>A Abbey</div> <div>AC Activity Center (above Bistro)</div> <div>ART Art Gallery</div> <div>B Bistro</div> <div>CDR Canterbury Dining Room</div> <div>CH Chapel</div> <div>JLR Jefferson Living Room</div> <div>MLR Madison Living Room</div> <div>P Pub</div> <div>WR Westport Room</div> <div>109 Apt. 109 Madison</div> <div>* Sign up at reception desk</div>		

## SEPTEMBER 2018

SUNDAY	MONDAY	TUESDAY	WEDNESDAY	THURSDAY	FRIDAY	SATURDAY
<b>A</b> Abbey <b>CD</b> Coventry Dining Room <b>CDR</b> Canterbury Dining Room <b>CH</b> Chapel <b>CL</b> Coventry Living Room <b>MLR</b> Madison Living Room <b>RR</b> Room to Room <b>TR</b> Therapy Room <b>YD</b> York Dining Room <b>YG</b> York Garden <b>YL</b> York Lounge			* PFL = Pets For Life			<b>1</b> 11:00 Exercise <b>CD</b> 11-12 Librarian Hours <b>WR</b> 1:30 PFL   Al & Chuck <b>RR</b> 2:00 Saturday Movie <b>CL</b>
<b>2</b> 10:00 Holy Eucharist <b>CH</b> 2:15 Sunday Movie <b>CL</b> 3:00 Bingo <b>YL</b>	<b>3</b> <b>Labor Day</b> <b>Offices   Bistro   Salon Closed</b> <b>No scheduled activities.</b>	<b>4</b> 10:00 Coffee & Donuts <b>RR</b> 11:00 Walking Club 1:30 Manicures <b>RR</b> 3:30 Bingo <b>CD</b> 6:15 Game Night <b>YL</b>	<b>5</b> 11:00 Stretch & Strengthen <b>TR</b> 1:00 PFL   Jan & Badger <b>RR</b> 3:00 Pianist Lenn Anderson <b>YL</b>	<b>6</b> 11:00 Walking Club 1:30 Needlework Hour <b>CL</b> 3:30 Bingo <b>TR</b> 6:30 Bingo Night <b>YL</b>	<b>7</b> <b>Chiefs Red Friday</b> 10:30 Resident Council <b>TR</b> 11:00 Stretch & Strengthen <b>TR</b> 1:00 Kauffman Gardens Tour <i>meet in CL</i>	<b>8</b> 11:00 Exercise <b>TR</b> 11-12 Librarian Hours <b>WR</b> 1:30 PFL   Al & Chuck <b>RR</b> 2:00 Saturday Movie <b>CL</b>
<b>9</b> 10:00 Holy Eucharist <b>CH</b> 2:15 Sunday Movie <b>CL</b> 3:00 Bingo <b>YL</b>	<b>10</b> 11:00 Stretch & Strengthen <b>TR</b> 3:00 Pianist Po Sim Head <b>MLR</b> 4:30 Men's Club <b>P</b>	<b>11</b> 9:30 Catholic Mass <b>CH</b> 2:00 Pianist Dorothy Brandwein <b>MLR</b> 6:15 Game Night <b>YL</b>	<b>12</b> 11:00 Stretch & Strengthen <b>TR</b> 1:00 PFL   Jan & Badger <b>RR</b> 1:30 Prayer Group <b>CL</b> 3:00 Vocalist Michelle Hawkins <b>YL</b>	<b>13</b> 11:00 Walking Club 3:30 Bingo with Cindy <b>TR</b> 6:30 Bingo Night <b>YL</b>	<b>14</b> 11:00 Stretch & Strengthen <b>TR</b> 1:30 Chair Volleyball <b>WR</b> 3:00 Michael O'Shiver   Harp & Piano <b>MLR</b>	<b>15</b> 11:00 Exercise <b>TR</b> 11-12 Librarian Hours <b>WR</b> 1:30 PFL   Al & Chuck <b>RR</b> 2:00 Saturday Movie <b>CL</b>
<b>16</b> 10:00 Holy Eucharist <b>CH</b> 2:15 Sunday Movie <b>CL</b> 3:00 Bingo <b>YL</b>	<b>17</b> 11:00 Stretch & Strengthen <b>TR</b> 1:00 Music Therapy <b>RR</b> 3:00 Ice Cream <b>RR</b> 4:30 Ladies' Club <b>P</b>	<b>18</b> 11:00 Walking Club 1:30 Manicures <b>RR</b> 3:30 Bingo <b>TR</b> 6:15 Game Night <b>YL</b>	<b>19</b> 11:00 Stretch & Strengthen <b>TR</b> 1:00 PFL   Jan & Badger <b>RR</b> 1:30 Prayer Group <b>CL</b> 3:00 Guitarist Braulio Bosi <b>MLR</b> 3:00 Lenn Anderson <b>YL</b>	<b>20</b> 11:00 Walking Club 1:30 Needlework Hour <b>CL</b> 3:30 Bingo <b>TR</b> 6:30 Bingo Night <b>YL</b>	<b>21</b> 11:00 Stretch & Strengthen <b>TR</b> 2:00 Pie of the Month <b>RR</b> 3:00 Pianist Tim Whitmer <b>MLR</b>	<b>22</b> <b>First Day of Fall</b> 11:00 Exercise <b>TR</b> 11-12 Librarian Hours <b>WR</b> 1:30 PFL   Al & Chuck <b>RR</b> 2:00 Saturday Movie <b>CL</b>
<b>23   30</b> 10:00 Holy Eucharist <b>CH</b> 2:15 Sunday Movie <b>CL</b> 3:00 Bingo <b>YL</b>	<b>24</b> 11:00 Stretch & Strengthen <b>TR</b> 1:00 Music Therapy <b>RR</b> 3:00 Pianist Donna Maddox <b>YL</b>	<b>25</b> 9:30 Catholic Mass <b>CH</b> 11:00 Walking Club 1:30 Manicures <b>RR</b> 3:30 Bingo <b>TR</b> 6:15 Game Night <b>YL</b>	<b>26</b> 10:45 Podiatrist <b>TR</b> 1:00 PFL   Jan & Badger <b>RR</b> 1:30 Prayer Group <b>CL</b> 3:00 Word Games <b>TR</b>	<b>27</b> 11:00 Walking Club 1:30 Needlework Hour <b>CL</b> 3:30 Bingo <b>TR</b> 6:30 Bingo Night <b>YL</b>	<b>28</b> 9:30 Baking Club <b>TR</b> 11:00 Stretch & Strengthen <b>TR</b> 1:30 Chair Volleyball <b>WR</b> 4:30 Cocktail Hour   Pianist Rich Hill <b>MLR</b>	<b>29</b> 11:00 Exercise <b>TR</b> 11-12 Librarian Hours <b>WR</b> 1:30 PFL   Al & Chuck <b>RR</b> 2:00 Saturday Movie <b>CL</b>

# SEPTEMBER 2018

SUNDAY	MONDAY	TUESDAY	WEDNESDAY	THURSDAY	FRIDAY	SATURDAY
<b>A</b> Abbey <b>CD</b> Coventry Dining Room <b>CDR</b> Canterbury Dining Room <b>CH</b> Chapel <b>CL</b> Coventry Living Room <b>MLR</b> Madison Living Room <b>RR</b> Room to Room <b>TR</b> Therapy Room <b>YD</b> York Dining Room <b>YG</b> York Garden <b>YL</b> York Lounge			* PFL = Pets For Life			<b>1</b> 10:15 Music Moves <b>YL</b> 1:30 PFL   Al & Chuck <b>RR</b> 2:30 Saturday Afternoon Adventure <b>YL</b>
<b>2</b> 10:00 Holy Eucharist <b>CH</b> 1:30 Praise & Worship <b>YD</b> 3:00 Bingo <b>YD</b>	<b>3</b> Labor Day <b>Offices   Bistro   Salon Closed</b> <b>No scheduled activities.</b>	<b>4</b> 10:00 Music Moves <b>YL</b> 10:30 Current News <b>YL</b> 1:30 Devotions <b>YD</b> 3:00 Bingo <b>YD</b> 6:15 Game Night <b>YL</b>	<b>5</b> 10:00 Music Moves <b>YL</b> 10:30 Current News <b>YL</b> 1:00 PFL   Jan & Badger <b>RR</b> 3:00 Pianist Lenn Anderson <b>YL</b>	<b>6</b> 10:00 Resident Council 10:30 Current News <b>YL</b> 2:30 Wheelchair Volleyball <b>YD</b> 6:30 Bingo Night <b>YL</b>	<b>7</b> Chiefs Red Friday 10:00 Garden Club <b>YG</b> 10:30 Current News <b>YL</b> 1:00 Kauffman Gardens Tour <b>bus leaves York at 1:30</b>	<b>8</b> 10:15 Music Moves <b>YL</b> 1:30 PFL   Al & Chuck <b>RR</b> 2:30 Saturday Afternoon Adventure <b>YL</b>
<b>9</b> 10:00 Holy Eucharist <b>CH</b> 1:30 Praise & Worship <b>YD</b> 2:00 PFL   Charlie the Pom <b>RR</b> 3:00 Bingo <b>YD</b>	<b>10</b> 10:00 Music Moves <b>YL</b> 10:30 Current News <b>YL</b> 1:30 Manicures <b>RR</b> 3:00 Pianist Donna Maddox <b>YL</b>	<b>11</b> 9:30 Catholic Mass <b>CH</b> 10:00 Music Moves <b>YL</b> 10:30 Current News <b>YL</b> 1:30 Devotions <b>YD</b> 3:00 Bingo <b>YD</b> 6:15 Game Night <b>YL</b>	<b>12</b> 10:00 Music Moves <b>YL</b> 10:30 Current News <b>YL</b> 1:00 PFL   Jan & Badger <b>RR</b> 3:00 Vocalist Michelle Hawkins <b>YL</b>	<b>13</b> 10:00 Music Moves <b>YL</b> 10:30 Current News <b>YL</b> 1:30 Movie Matinee <b>YL</b> 6:30 Bingo Night <b>YL</b>	<b>14</b> 10:00 Garden Club <b>YG</b> 10:30 Current News <b>YL</b> 1:30 Card & Board Games <b>YL</b> 3:00 Michael O'Shiver   Harp & Piano <b>MLR</b>	<b>15</b> 10:15 Music Moves <b>YL</b> 1:30 PFL   Al & Chuck <b>RR</b> 2:30 Saturday Afternoon Adventure <b>YL</b>
<b>16</b> 10:00 Holy Eucharist <b>CH</b> 1:30 Praise & Worship <b>YD</b> 3:00 Bingo <b>YD</b>	<b>17</b> 10:00 Music Moves <b>YL</b> 10:30 Current News <b>YL</b> 1:00 Movie Matinee <b>YL</b> 1:30 Manicures <b>RR</b> 3:00 Ice Cream Social <b>YL</b>	<b>18</b> 10:00 Music Moves <b>YL</b> 10:30 Current News <b>YL</b> 1:30 Devotions <b>YD</b> 3:00 Bingo <b>YD</b> 6:15 Game Night <b>YL</b>	<b>19</b> 10:00 Music Moves <b>YL</b> 10:30 Current News <b>YL</b> 1:00 PFL   Jan & Badger <b>RR</b> 3:00 Pianist Lenn Anderson <b>YL</b>	<b>20</b> 10:00 Music Moves <b>YL</b> 10:30 Current News <b>YL</b> 1:30 Himilayan Eugene <b>RR</b> 2:00 Pie of the Month <b>YL</b> 6:30 Bingo Night <b>YL</b>	<b>21</b> 10:00 Garden Club <b>YG</b> 10:30 Current News <b>YL</b> 1:30 Card & Board Games <b>YL</b> 3:00 Pianist Tim Whitmer <b>MLR</b>	<b>22</b> First Day of Fall 10:15 Music Moves <b>YL</b> 1:30 PFL   Al & Chuck <b>RR</b> 2:30 Saturday Afternoon Adventure <b>YL</b>
<b>23</b> 10:00 Holy Eucharist <b>CH</b> 1:30 Praise & Worship <b>YD</b> 2:00 PFL   Charlie: Pom <b>RR</b> 3:00 Bingo <b>YD</b>	<b>24</b> 10:00 Music Moves <b>YL</b> 10:30 Current News <b>YL</b> 1:30 Manicures <b>RR</b> 3:00 Pianist Donna Maddox <b>YL</b>	<b>25</b> 9:30 Catholic Mass <b>CH</b> 10:00 Music Moves <b>YL</b> 10:30 Current News <b>YL</b> 1:30 Devotions <b>YD</b> 3:00 Bingo <b>YD</b> 6:15 Game Night <b>YL</b>	<b>26</b> 8:30 Podiatrist <b>Y</b> 10:00 Music Moves <b>YL</b> 10:30 Current News <b>YL</b> 1:00 PFL   Jan & Badger <b>RR</b> 3:00 Word Games <b>YL</b>	<b>27</b> 10:00 Music Moves <b>YL</b> 10:30 Current News <b>YL</b> 2:30 Wheelchair Volleyball <b>YD</b> 6:30 Bingo Night <b>YL</b>	<b>28</b> 10:00 Garden Club <b>YG</b> 10:30 Current News <b>YL</b> 2:30 Oktoberfest <b>YL</b>	<b>29</b> 10:15 Music Moves <b>YL</b> 1:30 PFL   Al & Chuck <b>RR</b> 2:30 Saturday Afternoon Adventure <b>YL</b>
<b>30</b> 10:00 Holy Eucharist <b>CH</b> 1:30 Praise & Worship <b>YD</b> 3:00 Bingo <b>YD</b>						





### Guitarist Braulio Bosi

Wednesday, September 19

3:00 p.m.

Madison Living Room

Bráulio Bosi is Adjunct Instructor in Guitar at the UMKC Conservatory of Music. Born in Colatina, Espírito Santo, Brazil, he has been playing guitar for 15 years, starting at age 13. Bráulio has won multiple competitions and performed in many venues, theater productions, festivals, and concerts throughout Brazil and the United States.



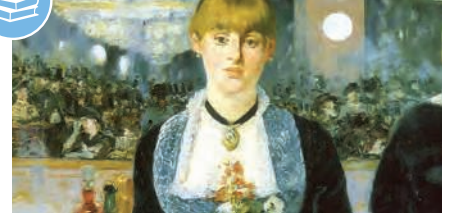
### Pianist Tim Whitmer

Friday, September 21

3:00 p.m.

Madison Living Room

Join us for another entertaining performance by BSP favorite Tim Whitmer. Tim carries on the tradition of Kansas City jazz with his inventive treatment of standards and fanciful original compositions. Classically trained, Tim followed the siren's call of jazz, studying at the Conservatory of Music at UMKC. Tim has led a series of renowned bands, drawn from local jazz legends and talented young players.



### The Great Courses | From Monet to Van Gogh: A History of Impressionism

Wednesday, September 26

3:00 p.m. | Westport Room

Join us for the Great Courses series, *From Monet to Van Gogh: A History of Impressionism*. Professor Richard Brettell gives insight into the artists who rebelled against the formality of the French Academy and created the most famous artistic movement in history. This month we'll watch lectures 13 (*The Third Exhibition*) and 14 (*Edgar Degas*).



### Speaker Series | Cathy Beaham Smith

Thursday, September 20

3:00 p.m. | Westport Room

Cathy Beaham Smith is a member of the board of directors of the Charlotte Street Foundation, a nonprofit that supports artists and the arts in Kansas City, the Vice President of Corporate Planning at Faultless Starch/Bon Ami Company, and resident Nancy Beaham's daughter! Cathy earned a bachelor's degree in English from Harvard University and a master's degree in journalism.



### Speaker Series | Mary Sanchez

Tuesday, September 25 | 3:00 p.m. | Westport Room

Mary Sanchez is a nationally-syndicated columnist with Tribune Content Agency, specializing in Latin American issues, immigration, race, politics, education, and culture. Her columns appear in publications across the nation and internationally. She also has been a metro columnist for *The Kansas City Star*.

Sanchez received the National Clarion Award in 2007 for

column writing, and she was a finalist that year for The American Society of Newspaper Editors Distinguished Writing Awards, having her columns included in "Best Newspaper Writing 2007," published by The Poynter Institute.

Sanchez has lived in Mexico and traveled extensively in Central America. She is a native of Kansas City.



# Chaplain's CORNER

September comes from the Latin root *septem*, meaning “seven,” which made sense under the original Roman calendar because September was the seventh month. Then along came the Julian calendar, which added two extra months and pushed September into ninth place, but the name has stuck and most of us live quite comfortably with the discrepancy.

The month of September has seen its share of significant events: the first professional American football game; the discovery of penicillin; the birth of Jim Henson and, through him, Kermit, Miss Piggy, and the rest of the Muppet gang. On the flip side, it was September when: Hitler invaded Poland, launching WWII; and we suffered the worst terrorist attack in U.S. history.

Each day of this new month—each day of our lives—is charged with possibilities, some delightful and some less so. May we notice our blessings and give thanks, and when the worst happens, may it bring out the best in us by God’s amazing grace.

*Hour by hour I place my days in your hand. (Ps. 31:15)*

—Chaplain Kathy Hall

## Roman Catholic Mass

**Father Bob** | Tuesday, September 11 | 9:30 a.m. | Chapel

**Father Bob** | Tuesday, September 25 | 9:30 a.m. | Chapel

## ***The History of Christianity: From the Disciples to the Dawn of the Reformation***

We will continue working our way through this Great Courses DVD series on **Tuesdays at 11:00 a.m.** in the **Westport Room**. All are welcome!

## Good Books

We meet on **Monday, September 24** (the **4th Monday** of the month), at **3:00 p.m.** to view the film version of Kent Haruf’s *Our Souls at Night*. **NOTE** | Please come to the Westport Room, NOT the Chapel.

## Rockhurst University’s Free Fall Prevention Screening



**Friday, September 28  
9–11 a.m. | Westport Room  
Sign-up required;  
please contact Helen at  
hravenhill@saintlukeskc.  
org or 595-5015.**

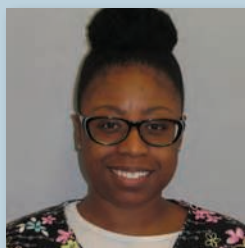
Fall prevention may not seem like a lively topic, but falls are a leading cause of injury among older adults. Physical therapists from Rockhurst University will visit BSP to provide a **FREE Fall Risk and Prevention Screening** on Friday, September 28, during Fall Prevention Awareness Week.

Using professional standards based upon the National Council on Aging and American Physical Therapy Association guidelines, therapists will screen individuals at risk for falls, checking risk factors such as blood pressure, balance, and vision. Participants will receive educational materials to help them reduce fall risk.

## HAPPY BIRTHDAY

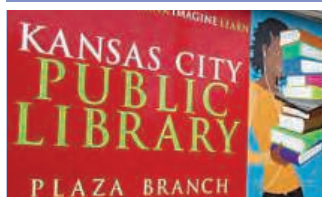
**Moulton Green**, September 1  
**Ben Seagraves**, September 1  
**Darlene Anderson**, September 2  
**Mary Wasson**, September 6  
**Edora Stell**, September 11  
**Dorothy Smith**, September 13  
**Dru Breidenthal**, September 14  
**Monty Brown**, September 14  
**John Barnard**, September 17  
**Joan Ridge**, September 17  
**Charlotte Gibson**, September 20  
**Carol Hudson**, September 23  
**Mercer Gilmore**, September 26  
**Barbara Ponder**, September 27  
**Barbara McCool**, September 29  
**Joan Betz**, September 30

## CONGRATULATIONS!



When you see Keyona Madden around BSP, give her a big round of applause. Keyona is a nurse in York Place and was the employee of the quarter for the second quarter of 2018. Congratulations, Keyona!

## PLAZA LIBRARY



**Thursday, September 27**  
 BSP bus departs 2:45 p.m.,  
 returns for pickup at 4:00 p.m.  
 Sign up with the concierge.



We hope residents have noticed that our beautiful white clematis blossoms have returned. The new flowers are showing those itinerant beetles that their six weeks of destructive gorging meant nothing to the clematis's desire to return beauty to our garden.



The overgrown ivy on the trellises opposite the Windsor Care door was removed last month. The trellises will be re-located next spring to a more decorative position.

A monarch butterfly scout was spotted last month making notes of our butterfly bushes. The migration of the monarchs to Mexico should begin this month, if it has not already begun. It could last into October; their flight depends on the onset of colder weather. Besides the bushes at the southwest corner of our garden, there are more around the herb garden. Enjoy!

—Bobbie Ellis





# *Cocktail Hour*

## WITH PIANIST RICH HILL

Friday, September 28, 4:30 p.m.

Madison Living Room | Canterbury Dining Room

Rich will perform while wine is served, 4:30-6:00 p.m.

Listen while you sit in the Pub, dine in the Canterbury Dining Room, or enjoy wine and cocktails in the Madison Living Room. Daily special and full dinner menu is available, also with complimentary drinks.

