

A close-up photograph of two monarch butterflies with orange and black patterned wings. They are perched on a cluster of purple, spiky flowers. The background is dark and out of focus.

# *The* AMBASSADOR

SAINT LUKE'S BISHOP SPENCER PLACE

August 2018

 **Saint Luke's**  
BISHOP SPENCER PLACE

## ACTIVITY KEY



**Celebration**



**Movie**



**Theatre**



**Arts**



**Music**



**Nature**



**Excursion**



**Speaker**



**Cocktails**



**Dining**



**Coffee &  
Conversation**



**Class**



### **Cool Breeze Duo**

Wednesday, August 1, 3:00 p.m.  
Madison Living Room

**Rescheduled from July:** Cool Breeze performers Chuck and Vicky Adkins delight audiences with their easy-listening style. They will perform songs from the 1930s to today. See you at this fun and lively concert!



### **Air Apparent | Fremar Duo**

Thursday, August 2, 3:00 p.m.  
Madison Living Room

Musicians Karen Fremar and Judy Johnson are back with their accordion/flute/vocal performance, playing swing and standards to get your toes tapping.



### **Spirituality & All That Jazz**

Wednesday, August 1  
BSP bus departs at 6:30 p.m.

Join us at Unity Temple for *Spirituality & All That Jazz*, hosted by Tim Whitmer. This month, hear jazz guitar great Danny Embrey performing with Tim Whitmer and The Consort Band.

**Sign up with the concierge.**



### **Movie Classic | The Graduate**

Friday, August 3, 2:00 p.m.  
Westport Room

*The Graduate*, from 1967, tells the story of a recent college graduate (Dustin Hoffman), who is seduced by an older woman (Anne Bancroft) and then falls in love with her daughter (Katharine Ross). *The Graduate* won the Academy Award for Best Director for Mike Nichols.



This is a monthly magazine for residents of Saint Luke's Bishop Spencer Place.

**Bishop Spencer Place** ♦ 4301 Madison Ave., Kansas City, MO 64111  
816-931-4277 ♦ [BishopSpencerPlace.org](http://BishopSpencerPlace.org)

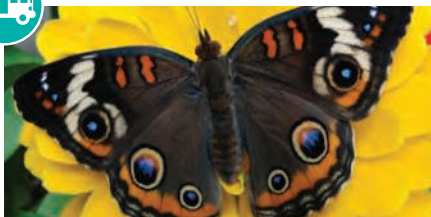




### Kurt Wheeler Jazz Trio

Sunday, August 5, 2:30 p.m.  
Madison Living Room

Jazz saxophonist and composer Kurt Wheeler, a prominent figure in the Kansas City jazz scene, has played at renowned venues such as the Green Lady Lounge, the Blue Room, and the Broadway Jazz Club. Kurt is also an adjunct professor of jazz at UMKC.



### Powell Gardens Festival of Butterflies Exhibition

Wednesday, August 8  
BSP bus departs at 1:00 p.m.

Join us for a trip to Powell Gardens to see this family favorite and immerse yourself in the world of butterflies native and exotic! Powell Gardens is a botanical garden set on 970 acres of lush, rolling hills and windswept meadows located just east of Kansas City.

**Sign up with the concierge.**

**NOTE** | Dr. Weidman will be available in the Westport Library on Saturdays this month—August 4, 11, 18, and 25—from **11:00 a.m. to noon.**



### Speaker Series | Scott Wagner

Thursday, August 9, 3:00 p.m.  
Westport Room

Mayoral candidate Scott Wagner has served on the Kansas City, Missouri, City Council since 2011 and as Mayor Pro Tem for the 2015–2019 term. Scott grew up in Kansas City and graduated from William Jewell College with a Bachelor of Science in History, Business, and Economics. He has owned his own marketing business for 16 years.



### Lunch & Learn | Turning Points in Middle Eastern History

Monday, August 13  
11:30 a.m. | program at noon  
Westport Room

Join us for two 30-minute talks from the Great Courses DVD series *Turning Points in Middle Eastern History*. Lunch begins promptly at 11:30 with the two talks beginning at noon and running until 1:00. Lunch will be provided (for 10 points). **Sign up with the concierge by Saturday, August 11, to reserve your lunch and allow PB&J time to prepare.**



### Speaker Series | Jennifer Lapka

Friday, August 10, 3:00 p.m.  
Westport Room

Jennifer Lapka grew up in Gorham, Kansas, and attended college at Fort Hays State University, majoring in art history. She earned her masters in museum studies at Newcastle upon Tyne in the United Kingdom. After working at Kemper Museum, the Nelson-Atkins Museum of Art, the Kauffman Center for the Performing Arts, the H&R Block Foundation, and the Marion and Henry Bloch Foundation, and after seeing the challenge the fashion industry faced in Kansas City, Jennifer used her nonprofit experience to found Rightfully Sewn.

Rightfully Sewn, a Kansas City nonprofit, provides seamstress training for at-risk women so they can thrive in a specialized workforce that will reestablish Kansas City as an epicenter of garment manufacturing, while at the same time cultivating Kansas City fashion designers through competitive, two-year residencies, propelling them to market so they can supply the burgeoning demand for high-quality, American-produced garments.



## Speaker Series | Pete Dulin

Monday, August 13, 3:00 p.m.  
Westport Room

Pete Dulin is the author of *Expedition of Thirst: Exploring Breweries, Distilleries and Wineries Across Central Kansas and Missouri*; *Kansas City Beer: A History of Brewing in the Heartland*; *KC Ale Trail*; and *Last Bite: 100 Simple Recipes from Kansas City's Best Chefs and Cooks*. Pete will talk about the history of Kansas City beer.



## Mary Holzhausen Duo

Friday, August 17, 2:30 p.m.  
Madison Living Room

Dr. Mary Holzhausen has appeared as a soloist in venues across North America and Europe. She is principal flutist in the Kansas City Civic Orchestra and the Kinnor Philharmonic of Kansas City and a member of several chamber ensembles, including Trio Sempre and the flute quartet, Collage. In the summer of 2015, Mary was a winner in the National Flute Association Newly Published Music Competition. This led to a performance at the 2015 NFA Convention in Washington, D.C.



## ART BLOCKS | Donna Houtteman

Monday, August 20, 3:00 p.m.  
Westport Room

Donna Houtteman, a docent at the Nelson-Atkins Museum of Art, is the leading voice behind the Kansas City Art Institute's Art Sofa Series, a class for anyone who has felt like an outsider to the art world but would really like to gain a basic understanding of key artists, movements, and ideas. This month's topic is Realism.



## Artist Reception | Nina Irwin

Wednesday, August 15, 4:00 p.m.  
Art Gallery

Irwin's delicate dreamlike "scapes" showcase hints of texture among flowing washes of color. Below the surface of each piece, Irwin strives to layer symbolism so the audience can achieve a sense of discovery. Irwin works from her studio in the historic stockyards of Kansas City. In 2013, her painting "Summery East" was selected for the Kansas City Artist Coalition's Six State River Market Regional Exhibit.



## Saints & Singers

Sunday, August 19, 1:30 p.m.  
Madison Living Room

Our own Chaplain Kathy Hall and her friends make up Saints & Singers—a musical group that blends whimsy with folk and Celtic music. This trio of old friends includes a teacher, a social worker, and a priest (Chaplain Kathy), plus guitars, flute, recorder, keyboard, and hammered dulcimer.



## The Great Courses | From Monet to Van Gogh: A History of Impressionism

Wednesday, August 22  
3:00 p.m.  
Westport Room

Join us for the Great Courses series, *From Monet to Van Gogh: A History of Impressionism*. Professor Richard Brettell gives insight into the artists who rebelled against the formality of the French Academy and created the most famous artistic movement in history. This month we'll watch lectures 11 (*Cézanne and Pissarro in Pontoise*) and 12 (*Berthe Morisot*).

SUNDAY	MONDAY	TUESDAY	WEDNESDAY	THURSDAY	FRIDAY	SATURDAY
			1 9:30 Catholic Mass <i>CH</i> 10:00 Stretch <i>AC</i> 10:30 Grocery Store Trip * 1:00 Tai Chi <i>AC</i> 3:00 Cool Breeze Duo <i>MLR</i> 6:30 Bus Departs for <i>Spirituality &amp; All That Jazz</i> *	2 10:00 Strength & Balance <i>AC</i> 1:30 Arthritis Exercise <i>AC</i> 2-4 CC Bank <i>MLR</i> 2:00 Life Enrichment Committee <i>P</i> 2:30 Dining Committee <i>A</i> 3:00 Air Apparent   Fremar Duo <i>MLR</i>	3 10:00 Stretch <i>AC</i> 2:00 Movie Classic with Robert Butler   <i>The Graduate</i> <i>WR</i>	4 9:30 Grocery Store Trip * 11-12 Librarian Hours <i>WR</i> 7:00 Movie <i>JLR</i>
5 10:00 Holy Eucharist <i>CH</i> 11-1 Brunch <i>CDR</i> 2:30 Kurt Wheeler Jazz <i>MLR</i> 3:30 Movie <i>JLR</i>	6 9:30 Tai Chi <i>AC</i> 10:30 Stretch <i>AC</i> 11:00 Welcome Committee <i>A</i> 12:00 Lunch & Bridge Mixer <i>CDR</i> * 1:00 Art Class <i>AC</i> 1:30 Dollar Tree Trip * 4:30 Men's Club <i>A</i>	7 Election Day 10:00 Strength & Balance <i>AC</i> 11:00 Bible Study <i>JLR</i> 1:00 Blood Pressure Check <i>109</i> 1:30 Arthritis Exercise <i>AC</i> 2:30 Alterations <i>A</i>	8 10:00 Stretch <i>AC</i> 10:30 Grocery Store Trip * 1:00 Tai Chi <i>AC</i> 1:00 Bus Departs for Powell Gardens Butterfly Exhibit *	9 10:00 Strength & Balance <i>AC</i> 1:30 Arthritis Exercise <i>AC</i> 2-4 CC Bank <i>MLR</i> 3:00 Speaker Series   Scott Wagner <i>WR</i>	10 10:00 Stretch <i>AC</i> 1:30 Chair Volleyball <i>WR</i> 3:00 Speaker Series   Jennifer Lapka <i>WR</i>	11 9:30 Grocery Store Trip * 11-12 Librarian Hours <i>WR</i> 7:00 Movie <i>JLR</i>
12 10:00 Holy Eucharist <i>CH</i> 11-1 Brunch <i>CDR</i> 3:00 Movie <i>JLR</i>	13 9:30 Tai Chi <i>AC</i> 10:30 Stretch <i>AC</i> 11:30 Lunch & Learn   Middle Eastern History <i>WR</i> * 1:00 Art Class <i>AC</i> 3:00 Speaker   Pete Dulin <i>WR</i> 4:30 Ladies' Club <i>P</i>	14 10:00 Strength & Balance <i>AC</i> 11:00 Bible Study <i>WR</i> 1:00 Blood Pressure Check <i>109</i> 1:30 Arthritis Exercise <i>AC</i> 3:30 Resident Council <i>A</i>	15 9:30 Catholic Mass <i>CH</i> 10:00 Stretch <i>AC</i> 10:30 Grocery Store Trip * 1:00 Tai Chi <i>AC</i> 4:00 Artist Reception for Nina Irwin <i>ART</i>	16 10:00 Strength & Balance <i>AC</i> 11:00 Friendly Neighbor Committee <i>WR</i> 1:30 Arthritis Exercise <i>AC</i> 2-4 CC Bank <i>MLR</i>	17 10:00 Stretch <i>AC</i> 2:30 Mary Holzhausen Flute and Piano Duo <i>MLR</i>	18 9:30 Grocery Store Trip * 11-12 Librarian Hours <i>WR</i> 7:00 Movie <i>JLR</i>
19 10:00 Holy Eucharist <i>CH</i> 11-1 Brunch <i>CDR</i> 1:30 Saints & Singers <i>MLR</i> 3:00 Movie <i>JLR</i>	20 9:30 Tai Chi <i>AC</i> 10:30 Stretch <i>AC</i> 1:00 Art Class <i>AC</i> 1:30 Walmart Trip * 3:00 Art Blocks   Donna Houtteman <i>WR</i>	21 10:00 Strength & Balance <i>AC</i> 11:00 Bible Study <i>WR</i> 1:00 Blood Pressure Check <i>109</i> 1:30 Arthritis Exercise <i>AC</i> 3:00 Speaker Series   Blair Kerkhoff <i>WR</i>	22 10:00 Stretch <i>AC</i> 10:30 Grocery Store Trip * 11:00 Café Hope <i>CH</i> 1:00 Tai Chi <i>AC</i> 3:00 Great Courses   From Monet to Van Gogh <i>WR</i>	23 10:00 Strength & Balance <i>AC</i> 1:30 Arthritis Exercise <i>AC</i> 2-4 CC Bank <i>MLR</i> 3:00 Zsolt Eder Classical Trio <i>MLR</i>	24 10:00 Stretch <i>AC</i> 1:30 Chair Volleyball <i>WR</i> 3:00 Speaker Series   Scangaroo Photo Scanning Demo <i>WR</i>	25 9:30 Grocery Store Trip * 11-12 Librarian Hours <i>WR</i> 7:00 Movie <i>JLR</i>
26 10:00 Holy Eucharist <i>CH</i> 11-1 Brunch <i>CDR</i> 3:00 Movie <i>JLR</i>	27 9:30 Tai Chi <i>AC</i> 10:30 Stretch <i>AC</i> 10:30 Women's Coffee <i>B</i> 1:00 Art Class <i>AC</i> 2:00 Garden Committee <i>A</i> 3:00 Good Books (Movie) Group: <i>A Man Called Ove</i> <i>WR</i> 6:30 PWMA <i>WR</i>	28 10:00 Strength & Balance <i>AC</i> 11:00 Bible Study <i>WR</i> 1:00 Blood Pressure Check <i>109</i> 1:30 Arthritis Exercise <i>AC</i> 3:00 Speaker Series   Tedrick Housh <i>WR</i>	29 10:00 Stretch <i>AC</i> 10:30 Grocery Store Trip * 1:00 Tai Chi <i>AC</i> 3:00 Vocalist Millie Edwards <i>MLR</i>	30 10:00 Strength & Balance <i>AC</i> 1:30 Arthritis Exercise <i>AC</i> 2-4 CC Bank <i>MLR</i> 2:45 Bus Departs for Plaza Library Pick up at 4:00 * 3:00 Speaker Series   Scott Burnett <i>WR</i>	31 10:00 Stretch <i>AC</i> 4:30 Cocktail Hour with Pianist Carl Bolte <i>MLR</i>	
				<div><div><div>A Abbey</div><div>AC Activity Center (above Bistro)</div><div>ART Art Gallery</div><div>B Bistro</div></div><div><div>CDR Canterbury Dining Room</div><div>CH Chapel</div><div>JLR Jefferson Living Room</div><div>MLR Madison Living Room</div></div><div><div>P Pub</div><div>WR Westport Room</div><div>109 Apt. 109 Madison</div><div>* Sign up at reception desk</div></div></div>		



## AUGUST 2018

SUNDAY	MONDAY	TUESDAY	WEDNESDAY	THURSDAY	FRIDAY	SATURDAY
<b>A</b> Abbey <b>CD</b> Coventry Dining Room <b>CDR</b> Canterbury Dining Room <b>CH</b> Chapel <b>CL</b> Coventry Living Room <b>MLR</b> Madison Living Room <b>RR</b> Room to Room <b>TR</b> Therapy Room <b>YD</b> York Dining Room <b>YG</b> York Garden <b>YL</b> York Lounge			<b>1</b> 9:30 Catholic Mass <b>CH</b> 11:00 Stretch & Strengthen <b>CD</b> 1:00 PFL   Jan & Badger <b>RR*</b> 1:30 Prayer Group <b>CD</b> 3:00 Cool Breeze Duo <b>MLR</b>	<b>2</b> 11:00 Walking Club <b>CL</b> 1:30 Visits <b>RR</b> 3:00 Air Apparent   Fremar Duo <b>MLR</b> 6:30 Bingo Night <b>YL</b>	<b>3</b> 11:00 Stretch & Strengthen <b>CD</b> 2:00 Movie Classic   The Graduate <b>WR</b> 3:00 Pianist Ethan Lane <b>YL</b>	<b>4</b> 11:00 Exercise <b>CD</b> 11-12 Librarian Hours <b>WR</b> 1:30 PFL   Al & Chuck <b>RR</b> 2:00 Saturday Movie <b>CD</b>
<b>5</b> 10:00 Holy Eucharist <b>CH</b> 2:30 Kurt Wheeler Jazz Trio <b>MLR</b>	<b>6</b> 11:00 Stretch & Strengthen <b>CD</b> 1:00 Music Therapy <b>RR</b> 3:00 Dominoes <b>TR</b> 4:30 Men's Club <b>P</b>	<b>7</b> Election Day 10:00 Coffee & Donuts <b>RR</b> 11:00 Walking Club <b>CL</b> 1:30 Manicures <b>RR</b> 3:30 Bingo <b>CD</b> 6:15 Game Night <b>YL</b>	<b>8</b> 11:00 Stretch & Strengthen <b>CD</b> 1:00 PFL   Jan & Badger <b>RR</b> 1:30 Prayer Group <b>CD</b> 1:30 PFL   Erin & Jay <b>RR</b> 2:00 Carnival <b>YL</b>	<b>9</b> 11:00 Walking Club <b>CL</b> 1:30 Visits <b>RR</b> 3:00 Needlework Hour <b>CL</b> 6:30 Bingo Night <b>YL</b>	<b>10</b> 10:15 Resident Council 11:00 Stretch & Strengthen <b>CD</b> 1:30 Chair Volleyball <b>WR</b> 3:00 Ice Cream Social <b>CD</b>	<b>11</b> 11:00 Exercise <b>CD</b> 11-12 Librarian Hours <b>WR</b> 1:30 PFL   Al & Chuck <b>RR</b> 2:00 Saturday Movie <b>CD</b>
<b>12</b> 10:00 Holy Eucharist <b>CH</b> 2:15 Sunday Movie <b>CD</b> 3:00 Bingo <b>YL</b>	<b>13</b> 11:00 Stretch & Strengthen <b>CD</b> 1:00 Music Therapy <b>RR</b> 3:00 Pianist Donna Maddox <b>YL</b> 4:30 Ladies' Club <b>P</b>	<b>14</b> 11:00 Walking Club <b>CL</b> 1:30 Manicures <b>RR</b> 3:30 Bingo <b>CD</b> 6:15 Game Night <b>YL</b>	<b>15</b> 9:30 Catholic Mass <b>CH</b> 11:00 Stretch & Strengthen <b>CD</b> 1:00 PFL   Jan & Badger <b>RR</b> 1:30 Prayer Group <b>CD</b> 3:00 Pianist Lenn Anderson <b>YL</b>	<b>16</b> 11:00 Walking Club <b>CL</b> 1:30 Visits <b>RR</b> 3:00 Needlework Hour <b>CL</b> 6:30 Bingo Night <b>YL</b>	<b>17</b> 9:30 Baking Club <b>TR</b> 11:00 Stretch & Strengthen <b>CD</b> 2:30 Mary Holzhausen Duo <b>MLR</b>	<b>18</b> 11:00 Exercise <b>CD</b> 11-12 Librarian Hours <b>WR</b> 1:30 PFL   Al & Chuck <b>RR</b> 2:00 Saturday Movie <b>CD</b>
<b>19</b> 10:00 Holy Eucharist <b>CH</b> 1:30 Saints & Singers <b>MLR</b> 3:00 Bingo <b>YL</b>	<b>20</b> 11:00 Stretch & Strengthen <b>CD</b> 1:00 Music Therapy <b>RR</b> 3:00 Dominoes <b>TR</b>	<b>21</b> 11:00 Walking Club <b>CL</b> 1:30 Manicures <b>RR</b> 3:30 Bingo <b>CD</b> 6:15 Game Night <b>YL</b>	<b>22</b> 11:00 Stretch & Strengthen <b>CD</b> 1:00 PFL   Jan & Badger <b>RR</b> 1:30 Prayer Group <b>CD</b> 2:00 PFL   Erin & Jay <b>RR</b> 3:00 Pianist Lenn Anderson <b>YL</b>	<b>23</b> 11:00 Walking Club <b>CL</b> 1:30 Visits <b>RR</b> 2:00 Pie of the Month <b>CD</b> 3:00 Zsolt Eder Classical Trio <b>MLR</b> 6:30 Bingo Night <b>YL</b>	<b>24</b> 11:00 Stretch & Strengthen <b>CD</b> 1:30 Chair Volleyball <b>WR</b> 3:00 Pianist Ethan Lane <b>YL</b>	<b>25</b> 11:00 Exercise <b>CD</b> 11-12 Librarian Hours <b>WR</b> 1:30 PFL   Al & Chuck <b>RR</b> 2:00 Saturday Movie <b>CD</b>
<b>26</b> 10:00 Holy Eucharist <b>CH</b> 2:15 Sunday Movie <b>CD</b> 3:00 Bingo <b>YL</b>	<b>27</b> 11:00 Stretch & Strengthen <b>CD</b> 1:00 Music Therapy <b>RR</b> 3:00 Pianist Donna Maddox <b>YL</b>	<b>28</b> 11:00 Walking Club <b>CL</b> 1:30 Manicures <b>RR</b> 3:30 Bingo <b>CD</b> 6:15 Game Night <b>YL</b>	<b>29</b> 11:00 Stretch & Strengthen <b>CD</b> 1:00 PFL   Jan & Badger <b>RR</b> 1:30 Prayer Group <b>CD</b> 3:00 Vocalist Millie Edwards <b>MLR</b>	<b>30</b> 11:00 Walking Club <b>CL</b> 1:30 Visits <b>RR</b> 3:00 Needlework Hour <b>CL</b> 6:30 Bingo Night <b>YL</b>	<b>31</b> 11:00 Stretch & Strengthen <b>CD</b> 1:30 Arts & Crafts <b>TR</b> 4:30 Cocktail Hour   Pianist Carl Bolte <b>MLR</b>	* PFL = Pets For Life

## AUGUST 2018

SUNDAY	MONDAY	TUESDAY	WEDNESDAY	THURSDAY	FRIDAY	SATURDAY
<b>A</b> Abbey <b>CD</b> Coventry Dining Room <b>CDR</b> Canterbury Dining Room <b>CH</b> Chapel <b>CL</b> Coventry Living Room <b>MLR</b> Madison Living Room <b>RR</b> Room to Room <b>TR</b> Therapy Room <b>YD</b> York Dining Room <b>YG</b> York Garden <b>YL</b> York Lounge			<b>1</b> 10:00 Music Moves <b>YL</b> 10:30 Current News <b>YL</b> 1:00 PFL   Jan & Badger <b>RR</b> * 3:00 Cool Breeze Duo <b>MLR</b>	<b>2</b> 10:00 Music Moves <b>YL</b> 10:30 Current News <b>YL</b> 1:30 PFL   Himalayan Eugene <b>RR</b> 3:00 Air Apparent   Fremar Duo <b>MLR</b> 6:30 Bingo Night <b>YL</b>	<b>3</b> 10:00 Garden Club <b>YG</b> 10:30 Current News <b>YL</b> 1:30 Card & Board Games <b>YL</b> 3:00 Pianist Ethan Lane <b>YL</b>	<b>4</b> 10:15 Music Moves <b>YL</b> 1:30 PFL   Al & Chuck <b>RR</b> 2:30 Saturday Afternoon Bingo <b>YL</b>
<b>5</b> 10:00 Holy Eucharist <b>CH</b> 1:30 Praise & Worship <b>YD</b> 2:30 Kurt Wheeler Jazz Trio <b>MLR</b>	<b>6</b> 10:00 Music Moves <b>YL</b> 10:30 Current News <b>YL</b> 1:00 Movie Matinee <b>YL</b> 1:30 Manicures <b>RR</b> 3:00 Word Games <b>YL</b>	<b>7</b> 10:00 Music Moves <b>YL</b> 10:30 Current News <b>YL</b> 1:30 Devotions <b>YD</b> 3:00 Bingo <b>YD</b> 6:15 Game Night <b>YL</b>	<b>8</b> 10:00 Music Moves <b>YL</b> 10:30 Current News <b>YL</b> 1:00 PFL   Jan & Badger <b>RR</b> 2:00 BSP Carnival <b>YD</b>	<b>9</b> 10:00 Resident Council 10:30 Stretch   News <b>YL</b> 2:30 Wheelchair Volleyball <b>YD</b> 6:30 Bingo Night <b>YL</b>	<b>10</b> 10:00 Garden Club <b>YG</b> 10:30 Current News <b>YL</b> 1:30 Card & Board Games <b>YL</b> 2:00 Ice Cream Social <b>YL</b>	<b>11</b> 10:15 Music Moves <b>YL</b> 1:30 PFL   Al & Chuck <b>RR</b> 2:30 Saturday Afternoon Adventure <b>YL</b>
<b>12</b> 10:00 Holy Eucharist <b>CH</b> 1:30 Praise & Worship <b>YD</b> 2:00 PFL   Charlie the Pom <b>RR</b> 3:00 Bingo <b>YD</b>	<b>13</b> 10:00 Music Moves <b>YL</b> 10:30 Current News <b>YL</b> 1:30 Manicures <b>RR</b> 3:00 Pianist Donna Maddox <b>YL</b>	<b>14</b> 10:00 Music Moves <b>YL</b> 10:30 Current News <b>YL</b> 1:30 Devotions <b>YD</b> 3:00 Bingo <b>YD</b> 6:15 Game Night <b>YL</b>	<b>15</b> 9:30 Catholic Mass <b>CH</b> 10:00 Music Moves <b>YL</b> 10:30 Current News <b>YL</b> 1:00 PFL   Jan & Badger <b>RR</b> 3:00 Pianist Lenn Anderson <b>YL</b>	<b>16</b> 10:00 Music Moves <b>YL</b> 10:30 Current News <b>YL</b> 1:30 Carlisle Volunteers 3:00 Wii Games <b>YD</b> 6:30 Bingo Night <b>YL</b>	<b>17</b> 10:00 Garden Club <b>YG</b> 10:30 Current News <b>YL</b> 1:30 Card & Board Games <b>YL</b> 2:30 Mary Holzhausen Duo <b>MLR</b>	<b>18</b> 10:15 Music Moves <b>YL</b> 1:30 PFL   Al & Chuck <b>RR</b> 2:30 Saturday Afternoon Adventure <b>YL</b>
<b>19</b> 10:00 Holy Eucharist <b>CH</b> 1:30 Saints & Singers <b>MLR</b> 3:00 Bingo <b>YD</b>	<b>20</b> 10:00 Music Moves <b>YL</b> 10:30 Current News <b>YL</b> 1:00 Movie Matinee <b>YL</b> 1:30 Manicures <b>RR</b> 3:00 Word Games <b>YL</b>	<b>21</b> 10:00 Music Moves <b>YL</b> 10:30 Current News <b>YL</b> 1:30 Devotions <b>YD</b> 3:00 Bingo <b>YD</b> 6:15 Game Night <b>YL</b>	<b>22</b> 10:00 Music Moves <b>YL</b> 10:30 Current News <b>YL</b> 1:00 PFL   Jan & Badger <b>RR</b> 3:00 Pianist Lenn Anderson <b>YL</b>	<b>23</b> 10:00 Music Moves <b>YL</b> 10:30 Current News <b>YL</b> 1:30 Arts & Crafts <b>YL</b> 1:30 Pie of the Month Club <b>YL</b> 3:00 Zsolt Eder Classical Trio <b>MLR</b> 6:30 Bingo Night <b>YL</b>	<b>24</b> 10:00 Garden Club <b>YG</b> 10:30 Current News <b>YL</b> 1:30 Italian Greyhound Visit <b>RR</b> 3:00 Pianist Ethan Lane <b>YL</b>	<b>25</b> 10:15 Music Moves <b>YL</b> 1:30 PFL   Al & Chuck <b>RR</b> 2:30 Saturday Afternoon Adventure <b>YL</b>
<b>26</b> 10:00 Holy Eucharist <b>CH</b> 2:00 PFL   Charlie the Pom <b>RR</b> 3:00 Bingo <b>YD</b>	<b>27</b> 10:00 Music Moves <b>YL</b> 10:30 Current News <b>YL</b> 1:30 Manicures <b>RR</b> 3:00 Pianist Donna Maddox <b>YL</b>	<b>28</b> 10:00 Music Moves <b>YL</b> 10:30 Current News <b>YL</b> 1:30 Devotions <b>YD</b> 3:00 Bingo <b>YD</b> 6:15 Game Night <b>YL</b>	<b>29</b> 10:00 Music Moves <b>YL</b> 10:30 Current News <b>YL</b> 1:00 PFL   Jan & Badger <b>RR</b> 3:00 Vocalist Millie Edwards <b>MLR</b>	<b>30</b> 10:00 Music Moves <b>YL</b> 10:30 Current News <b>YL</b> 2:30 Wheelchair Volleyball <b>YD</b> 6:30 Bingo Night <b>YL</b>	<b>31</b> 10:00 Garden Club <b>YG</b> 10:30 Current News <b>YL</b> 2:00 Garden Pool Party <b>YG</b>	* PFL = Pets For Life



## Speaker Series | Blair Kerkhoff

**Tuesday, August 21, 3:00 p.m.  
Westport Room**

Longtime Kansas City *Star* sportswriter Blair Kerkhoff has covered it all, most recently chronicling the Royals' rise to a World Series championship and the rebuild of the Chiefs under head coach Andy Reid.

Blair grew up in Raleigh, North Carolina, and graduated from Appalachian State. He joined the Roanoke (Va.) *Times & World-News* in 1981, and since then has spent nearly every school-year Saturday in a press box or on press row.

Blair has been covering sports for the *Star* since 1989, when he began covering University of Kansas athletics. In 2016, he was elected into the United States Basketball Writers Association Hall of Fame as an award-winning college columnist. He has written five books, including *Phog Allen: The Father of Basketball Coaching*; *Upon Further Review: Controversy in Sports Officiating*; and *Tournament Town Kansas City: Where the Basketball Madness Began*, and serves in an advisory role with the National Collegiate Basketball Hall of Fame in Kansas City.



## Zsolt Eder Classical Trio

**Thursday, August 23, 3:00 p.m.  
Madison Living Room**

Violinist Zsolt Eder, concertmaster of the Topeka Symphony Orchestra, has appeared throughout North America, Europe, and Australia in solo, chamber music, and orchestral performances. Zsolt was born in Budapest, Hungary, spent most of his childhood in Perth, Australia, and came to the United States to earn bachelor's and master's degrees at the Cleveland Institute of Music and a doctorate in violin performance at UMKC.



## Speaker Series | Tedrick Housh

**Tuesday, August 28, 3:00 p.m.  
Westport Room**

BSP welcomes attorney Tedrick Housh, who will talk about web security. Tedrick is chair of cybersecurity and data privacy at Lathrop and Gage, where he leads the firm's work on data privacy, data security, and data breach issues. Before entering law school, Tedrick served as a Peace Corps volunteer in the Democratic Republic of the Congo and taught English as a Second Language with the Blue Valley (Kansas) School District.



## Speaker Series | Scangaroo Demo

**Friday, August 24, 3:00 p.m.  
Westport Room**

Scangaroo is a mobile digitizing service. They come to a client's location to digitize slides, photos, albums, video, film, and documents so that their clients don't need to part with precious family photos they want to have scanned. Scangaroo is passionate about preserving history so that it can be shared with family and friends.



## Vocalist Millie Edwards

**Wednesday, August 29  
3:00 p.m.  
Madison Living Room**

With her brassy vocals and distinctive vibrato, vocalist Millie Edwards, occasionally introduced to audiences as "the little woman with a big voice," is well-known on the Kansas City jazz scene. Millie is equally adept at belting out cabaret, pop, blues, and jazz.



# Chaplain's CORNER

A few days ago, taking the trash out to the dumpster became an adventure. For some reason I looked before I tossed, and it's a good thing because the contents of the receptacle were fragile: six baby raccoons, rattling around in the bottom, unable to scale the walls to get out. Mama was hovering in a nearby wooded area, apparently unable to help them and unwilling to leave.

My husband and I looked around for something to give the animals traction. The best thing we had was a broom. It was long enough to get the babies to the top but it turned out to be too smooth; they got so far and then slid off.

Jim and I were hovering (at a respectful distance from Mama) when Sam the maintenance man drove up. He took in the situation, went back to the workshop and returned with two rough wooden ladders, one for inside the dumpster and one for outside. The humans retreated; the babies scaled and descended the heights; Mama collected them and herded them into the trees.

Jesus teaches us to love our neighbors, even the ones that are pests. To pull together so that, empowered by his Spirit, we can accomplish more than we ever could on our own. When we do that, we become channels of amazing grace—for all kinds of families!

*All things bright and beautiful, all creatures great and small,  
all things wise and wonderful: The Lord God made them all.*

—Chaplain Kathy Hall

## Roman Catholic Mass

**Father Bob** | Wednesday, August 1 | 9:30 a.m. | Chapel

**Father Bob** | Wednesday, August 15 | 9:30 a.m. | Chapel

## ***The History of Christianity: From the Disciples to the Dawn of the Reformation***

We will continue working our way through this Great Courses DVD series on **Tuesdays at 11:00 a.m.** in the **Westport Room**. All are welcome!

**NOTE** | On **August 7** there will be voting in the Westport Room, so we will meet in the **Jefferson Living Room** instead.



## Speaker Series | **Scott Burnett**

**Thursday, August 30, 3:00 p.m.**  
**Westport Room**

Scott Burnett visits BSP to speak about Habitat for Humanity. Scott has served in the Jackson County Legislature since 1998 and has been involved in politics and government for much of his professional life. From 1977 to 1980, he served as Special Assistant in the Carter White House, working in the areas of scheduling and advance preparations for the president. Over the years, Scott has worked with President and Mrs. Jimmy Carter on Habitat for Humanity projects, including serving as part of a crew of more than 2,000 volunteers who built 82 homes in Thailand in 2009. Last year, Scott and his family were invited to spend Thanksgiving with the Carters in their home in Georgia.

## Good Books

This month we will watch the film version of *A Man Called Ove*, which we read a couple of months ago. We will meet at **3:00** in the **Westport Room** on **Monday, August 27** (the 4th Monday). Please join us—whether or not you have read the book, it's a great story!

## HAPPY BIRTHDAY



**Jenifer Lucas**, August 1  
**Kaleen Tiber**, August 2  
**Stephen Dill**, August 4  
**Robbie Levi**, August 8  
**Bernie Jones**, August 10  
**Bob Steinbach**, August 10  
**Rena Jonathan**, August 12  
**Doug Rushing**, August 17  
**Gloria Henshaw**, August 20  
**Dorothy Lockridge**, August 20  
**Katie Vogel**, August 20  
**Jerry Wheeler**, August 28  
**Mary Edith Lillis**, August 30  
**Ruth Moss**, August 30  
**Frances Weeks**, August 30

## PLAZA LIBRARY



**Thursday, August 30**  
 BSP bus departs 2:45 p.m.,  
 returns for pickup at 4:00 p.m.  
 Sign up with the concierge.

## CONGRATULATIONS!



When you see Jemia Love around BSP, give her a hearty shout-out. Jemia was the employee of the quarter for the first quarter of 2018. This is our first-ever employee of the quarter award. Congratulations, Jemia!



Last month was a disaster! A horde of Japanese beetles invaded the Memorial Garden and ate our beautiful re-blooming clematis blossoms, our spectacular white lily blossoms, our struggling rose bushes, and the weeping cherry tree's leaves. They were unwelcome guests last year, too, and apparently told all their hungry collaborator that the dining is great here.



Japanese beetles descend four to eight feet into the soil to

overwinter. When fully grown, in late spring, the larvae pupate for a few weeks. They emerge as adults in mid-June and crawl to the surface to fly, mate, and lay eggs. As adults, they live for about two months.

What possible good do they do for the earth? Why do they exist? Who or what benefits from such wholesale destruction of nature's beauty? Answers and questions are always welcome in person or in writing to the Garden Committee.

—Bobbie Ellis





# *Cocktail Hour*

## WITH PIANIST CARL BOLTE

Friday, August 31, 4:30 p.m.

Madison Living Room | Canterbury Dining Room

Carl will perform while wine is served, 4:30–6:00 p.m.

Listen while you sit in the Pub, dine in the Canterbury Dining Room, or enjoy wine and cocktails in the Madison Living Room. Daily special and full dinner menu is available, also with complimentary drinks.

