



# *The* AMBASSADOR

SAINT LUKE'S BISHOP SPENCER PLACE

May 2018

 **Saint Luke's**  
BISHOP SPENCER PLACE

## ACTIVITY KEY



**Celebration**



**Movie**



**Theatre**



**Arts**



**Music**



**Nature**



**Excursion**



**Speaker**



**Cocktails**



**Dining**



**Coffee & Conversation**



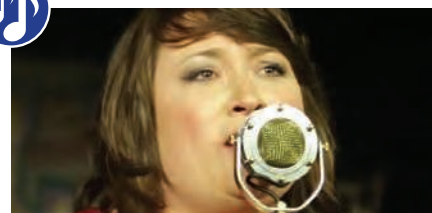
**Class**



### Speaker Series | Dr. Brandon Pomeroy

Tuesday, May 1, 3:00 p.m.  
Westport Room

Rescheduled from February: Saint Luke's urologist Brandon Pomeroy will discuss his novels *As It Is*, *When It Was* and *In My Time of Need* and non-fiction book *Grace Upon Grace: The Story of Ibrahima Kodio and a Remarkable School in West Africa*.



### Spirituality & All That Jazz

Wednesday, May 2  
BSP bus departs at 6:30 p.m.

Join us at Unity Temple for *Spirituality & All That Jazz*, hosted by Tim Whitmer. This month, enjoy the versatile vocals of Havilah Bruders performing with Tim Whitmer and The Consort Band.

**Sign up with the concierge.**



### Speaker Series | Joe Reardon

Thursday, May 3, 3:00 p.m. | Westport Room

We're honored to welcome Joe Reardon, former Mayor/CEO of the Unified Government of Wyandotte County/Kansas City, Kansas, and current President and CEO of the Greater Kansas City Chamber of Commerce. During his two terms as Mayor/CEO, Reardon led the successful

effort to bring Google high-speed fiber to his community and oversaw the opening of Sporting Park Soccer Stadium, the state-of-the-art home of Sporting Kansas City, and the new Cerner campus that brought 4000 new jobs to the Village West area.



This is a monthly magazine for residents of Saint Luke's Bishop Spencer Place.

**Bishop Spencer Place** ♦ 4301 Madison Ave., Kansas City, MO 64111  
816-931-4277 ♦ [BishopSpencerPlace.org](http://BishopSpencerPlace.org)



### Musician Danny Embrey

Friday, May 4, 3:00 p.m.  
Madison Living Room

Kansas City-based jazz musician Danny Embrey is in demand as a musician, arranger, composer, and producer. Embrey has toured and performed with Sergio Mendes and recorded and toured with Karrin Allyson. He played for the Reagans in the East Room of the White House. He also appeared on “Solid Gold,” “The Merv Griffin Show,” and “The Johnny Carson Show.”



### Humberto Sierralta

Monday, May 7, 2:00 p.m.  
Madison Living Room

Concert pianist and composer Humberto Sierralta is well-known in his native Peru, where he played on a weekly television program, and here in the United States as a prestigious performer. His compositions have won many awards, including one piece that is ranked in the top 10 best pieces of international music.



### Kansas City Church Tour | Friends of Sacred Structures

Wednesday, May 9  
BSP bus departs at 1:00 p.m.

Join us as we explore Kansas City churches. This Friends of Sacred Structures trip includes a brief tour of Redemptorist Church as well as a driving tour of other beautiful spaces mid- and downtown. Our tour guide is Joanie Shields.

Sign up with the concierge.



### Derby Day!

Saturday, May 5, 4:30–6:00 p.m.  
Westport Room

Celebrate Derby Day 2018—complete with BSP resident Bill Buckner’s famous mint juleps on the house! Buckner prepares them himself, steeping the 90-proof Kentucky Bourbon with syrup and mint from the BSP herb garden. Along with our juleps, we’ll have traditional Derby snacks and nonalcoholic beverages. *Bring \$2 cash or more for if you want to participate in the Derby Pool.* Ladies are encouraged to wear outrageous hats!



### KC Symphony String Quartet

Tuesday, May 8, 2:30 p.m.  
Madison Living Room

Through a gift from the Kansas City Symphony to BSP, we are honored to host the KC Symphony String Quartet, headed by Lawrence Figg, with Anne-Marie Brown, violin, Minhye Choi, violin, Jessica Nance, viola, and Lawrence Figg, cello.



### Lunch Out at Café Europa

Thursday, May 10  
BSP bus departs at 11:00 a.m.

Café Europa is an inviting neighborhood restaurant that focuses on good, seasonal food. Its menus change monthly to reflect fresh ingredients at their peak of quality and sustainable availability.

Sign up with the concierge by May 7th so we can reserve the BSP bus!

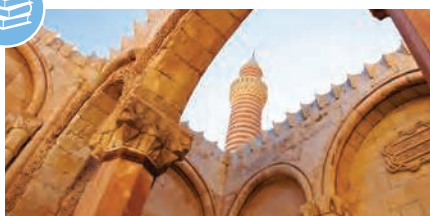




## Speaker Series | Dr. Dave Ekerdt

Thursday, May 10, 3:00 p.m.  
Westport Room

Dr. David J. Ekerdt, Professor of Sociology and Gerontology at the University of Kansas and Director of the university's Gerontology Center, will speak about Social Security. Dr. Ekerdt serves as President of the Gerontological Society of America (GSA), the nation's oldest and largest interdisciplinary society for research, education, and practice in the field of aging.



## Lunch & Learn | Turning Points in Middle Eastern History

Monday, May 14, 11:30 a.m.  
Westport Room

Explore discoveries, inventions, upheavals, and ideas that shaped the modern world with two 30-minute talks from the Great Courses DVD series *Turning Points in Middle Eastern History*, followed by a group discussion.

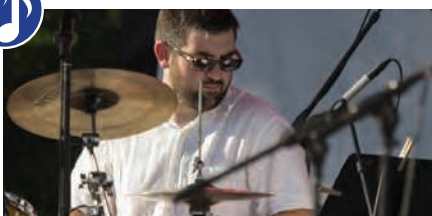
**Lunch will be provided (for ten points). Please sign up with the concierge by Saturday, May 12, to reserve your lunch and allow PB&J time to prepare.**



## Scuola Vita Nuova Bands

Thursday, May 17, 10:00 a.m.  
Canterbury Dining Room

Scuola Vita Nuova Charter School is located in the northeast part of Kansas City. The school's band program is in its second year of existence and currently serves 5th–8th grade students. We will be treated to a brief recital of two woodwind, brass, and percussion bands from the center of the Canterbury Dining Room—sure to be heard throughout BSP!



## Sam Wisman Trio

Friday, May 11, 3:00 p.m.  
Madison Living Room

Jazz drummer Sam Wisman has performed with such diverse groups and musicians as Marimba Sol de Chiapas, Bobby Watson, and the Kansas City Symphony. He has also worked extensively as a percussionist in musical theater, including the Kansas City Repertory Theater, New Theatre Restaurant, and the Coterie Theater. You can listen to Sam as a DJ for Jazz Afternoon on 90.1 FM KKFI.



## Frank and Maria Bramwell: The Kennedys and Camelot

Wednesday, May 16, 3:00 p.m.  
Westport Room

From their "History Tours," Maria and Frank Bramwell will present *The Kennedys and Camelot* and their impeccable entertainment style. Come have a glass of sparkling burgundy as you reminisce about this time.



## Movie Classic with Robert Butler | Whale Rider

Thursday, May 17, 2:30 p.m.  
Westport Room

In *Whale Rider*, a modern classic from New Zealand, a young Maori girl (Keisha Castle-Hughes) fights to fulfill her destiny to become the chief of the tribe—a role her grandfather believes is a role reserved for males only. At age 13, Castle-Hughes was nominated for the Academy Award for Best Actress.

SUNDAY	MONDAY	TUESDAY	WEDNESDAY	THURSDAY	FRIDAY	SATURDAY
		<div>1</div> <div>10:00 Strength &amp; Balance AC</div> <div>11:00 Bible Study CH</div> <div>1:00 Blood Pressure Check 109</div> <div>1:30 Arthritis Exercise AC</div> <div>2:30 Alterations A</div> <div>3:00 Speaker Series   Brandon Pomeroy WR</div>	<div>2</div> <div>9:30 Catholic Mass CH</div> <div>10:00 Stretch AC</div> <div>10:30 Grocery Store Trip *</div> <div>6:30 Bus Departs to Spirituality &amp; All That Jazz *</div>	<div>3</div> <div>9:30 Strength &amp; Balance AC</div> <div>10:30 Chair Yoga AC</div> <div>1:30 Arthritis Exercise AC</div> <div>2-4 CC Bank MLR</div> <div>2:00 Life Enrichment Committee P</div> <div>2:30 Dining Committee A</div> <div>3:00 Speaker Series   Joe Reardon WR</div>	<div>4</div> <div>10:00 Stretch AC</div> <div>11-1 Cinco de Mayo Lunch P and CDR</div> <div>3:00 Musician Danny Embrey MLR</div>	<div>5</div> <div>Cinco de Mayo</div> <div>9:30 Grocery Store Trip *</div> <div>10-12 Librarian Hours WR</div> <div>4:30-6 Kentucky Derby Day Bash WR</div> <div>7:00 Movie JLR</div>
<div>6</div> <div>10:00 Holy Eucharist CH</div> <div>11-1 Brunch CDR</div> <div>3:00 Movie JLR</div>	<div>7</div> <div>9:30 Tai Chi Class AC</div> <div>10:30 Stretch Class AC</div> <div>11:00 Welcome Committee A</div> <div>12:00 Lunch &amp; Bridge Mixer CDR</div> <div>1:00 Art Class AC</div> <div>1:30 Dollar Tree Trip *</div> <div>2:00 Humberto Sierralta MLR</div> <div>4:30 Men's Club P</div>	<div>8</div> <div>10:00 Strength &amp; Balance AC</div> <div>11:00 Bible Study CH</div> <div>1:00 Blood Pressure Check 109</div> <div>1:30 Arthritis Exercise AC</div> <div>2:30 KC Symphony String Quartet MLR</div> <div>3:30 Resident Council A</div>	<div>9</div> <div>10:00 Stretch AC</div> <div>10:30 Grocery Store Trip *</div> <div>1:00 Bus Departs to Kansas City Church Tour   Friends of Sacred Structures *</div>	<div>10</div> <div>9:30 Strength &amp; Balance AC</div> <div>10:30 Chair Yoga AC</div> <div>11:00 Bus Departs for Lunch Out at Café Europa *</div> <div>1:30 Arthritis Exercise AC</div> <div>2-4 CC Bank MLR</div> <div>3:00 Speaker Series   Dave Ekerdt WR</div>	<div>11</div> <div>10:00 Stretch AC</div> <div>1:30 Chair Volleyball WR</div> <div>3:00 Sam Wisman Trio MLR</div>	<div>12</div> <div>9:30 Grocery Store Trip *</div> <div>10-12 Librarian Hours WR</div> <div>7:00 Movie JLR</div>
<div>13</div> <div>Mother's Day</div> <div>10:00 Holy Eucharist CH</div> <div>11-1 Brunch CDR</div> <div>3:00 Movie JLR</div>	<div>14</div> <div>9:30 Tai Chi Class AC</div> <div>10:30 Stretch Class AC</div> <div>11:30 Lunch &amp; Learn   Middle Eastern History WR *</div> <div>1:00 Art Class AC</div> <div>4:30 Ladies' Club P</div>	<div>15</div> <div>10:00 Strength &amp; Balance AC</div> <div>11:00 Bible Study CH</div> <div>1:00 Blood Pressure Check 109</div> <div>1:30 Arthritis Exercise AC</div>	<div>16</div> <div>9:30 Catholic Mass CH</div> <div>10:00 Stretch AC</div> <div>10:30 Grocery Store Trip *</div> <div>11:00 Café Hope CH</div> <div>3:00 Frank &amp; Maria Bramwell: Entertainment Style of the Kennedys/Camelot WR</div>	<div>17</div> <div>9:30 Strength &amp; Balance AC</div> <div>10:00 Scuola Vita Nuova Bands CDR</div> <div>10:30 Chair Yoga AC</div> <div>11:00 Friendly Neighbor Comm WR</div> <div>1:30 Arthritis Exercise AC</div> <div>2-4 CC Bank MLR</div> <div>2:30 Movie Classic with Robert Butler   Whale Rider WR</div>	<div>18</div> <div>10:00 Stretch AC</div> <div>3:00 Nicholas Good   Harpsichord CH</div> <div>6:30 Bus Departs to Village Presbyterian   Jan Kraybill Recital *</div>	<div>19</div> <div>9:30 Grocery Store Trip *</div> <div>10-12 Librarian Hours WR</div> <div>7:00 Movie JLR</div>
<div>20</div> <div>10:00 Holy Eucharist CH</div> <div>11-1 Brunch CDR</div> <div>3:00 Movie JLR</div>	<div>21</div> <div>9:30 Tai Chi Class AC</div> <div>10:30 Stretch Class AC</div> <div>1:00 Art Class AC</div> <div>1:30 Walmart Trip *</div> <div>2:00 Garden Committee A</div> <div>3:00 Art Blocks   Donna Houtteman WR</div>	<div>22</div> <div>10:00 Strength &amp; Balance AC</div> <div>11:00 Bible Study CH</div> <div>1:00 Blood Pressure Check 109</div> <div>1:30 Arthritis Exercise AC</div>	<div>23</div> <div>10:00 Stretch AC</div> <div>10:30 Grocery Store Trip *</div> <div>3:00 Classical Duo Chun-Chien Chuang &amp; John Villaveces MLR</div>	<div>24</div> <div>9:30 Strength &amp; Balance AC</div> <div>10:30 Chair Yoga AC</div> <div>1:30 Arthritis Exercise AC</div> <div>2-4 CC Bank MLR</div> <div>3:00 Speaker Series   Wendy Doyle WR</div>	<div>25</div> <div>10:00 Stretch AC</div> <div>4:30 Cocktail Hour with Pianist Roger Wilder MLR</div>	<div>26</div> <div>9:30 Grocery Store Trip *</div> <div>10-12 Librarian Hours WR</div> <div>7:00 Movie JLR</div>
<div>27</div> <div>10:00 Holy Eucharist CH</div> <div>11-1 Brunch CDR</div> <div>2:00 Grace Kohan's Student Recital MLR</div> <div>3:00 Movie JLR</div>	<div>28</div> <div>Memorial Day</div> <div>BISTRO, SALON, &amp; OFFICES CLOSED</div> <div>Holiday Lunch 11:00 a.m.-1:00 p.m. Canterbury Dining Room</div> <div>9:30 Tai Chi Class AC</div>	<div>29</div> <div>10:00 Strength &amp; Balance AC</div> <div>11:00 Bible Study CH</div> <div>1:00 Blood Pressure Check 109</div> <div>1:30 Arthritis Exercise AC</div> <div>3:00 Good Book Reading Group   A Man Called Ove CH</div>	<div>30</div> <div>10:00 Stretch AC</div> <div>10:30 Grocery Store Trip *</div> <div>3:00 Great Courses   From Monet to Van Gogh WR</div>	<div>31</div> <div>9:30 Strength &amp; Balance AC</div> <div>10:30 Chair Yoga AC</div> <div>1:30 Arthritis Exercise AC</div> <div>2-4 CC Bank MLR</div> <div>2:45 Bus Departs for Plaza Library Pick up at 4:00 *</div> <div>3:00 Johnny Carson Show WR</div>		
				<div>A Abbey</div> <div>AC Activity Center (above Bistro)</div> <div>ART Art Gallery</div> <div>B Bistro</div> <div>CDR Canterbury Dining Room</div> <div>CH Chapel</div> <div>JLR Jefferson Living Room</div> <div>MLR Madison Living Room</div> <div>P Pub</div> <div>WR Westport Room</div> <div>109 Apt. 109 Madison</div> <div>* Sign up at reception desk</div>		

# MAY 2018

SUNDAY	MONDAY	TUESDAY	WEDNESDAY	THURSDAY	FRIDAY	SATURDAY
<b>A</b> Abbey <b>CD</b> Coventry Dining Room <b>CDR</b> Canterbury Dining Room <b>CH</b> Chapel <b>CL</b> Coventry Living Room		<b>MLR</b> Madison Living Room <b>RR</b> Room to Room <b>TR</b> Therapy Room <b>YD</b> York Dining Room <b>YL</b> York Lounge				
		<b>1</b> 11:00 Walking Club <b>CL</b> 1:30 Manicures <b>RR</b> 3:30 Bingo <b>CD</b> 6:00 Game Night <b>YL</b>	<b>2</b> 9:30 Catholic Mass <b>CH</b> 11:00 Stretch & Strengthen <b>CD</b> 1:00 Pets For Life <b>RR</b> 1:30 Prayer Group <b>CD</b> 3:00 Pianist Lenn Anderson <b>YL</b>	<b>3</b> 11:00 Walking Club <b>CL</b> 1:00 Himalayan Eugene <b>CD</b> 3:00 Needlework Hour <b>CL</b> 6:30 Bingo <b>YL</b>	<b>4</b> 11:00 Stretch & Strengthen <b>CD</b> <b>11-1</b> Cinco de Mayo Lunch <b>P and CDR</b> 1:30 Kings in the Corner <b>TR</b> 3:00 Musician Danny Embrey <b>MLR</b>	<b>5</b> 10-12 Librarian Hours <b>WR</b> 11:00 Exercise <b>CD</b> 1:30 Pets for Life <b>RR</b> 2:00 Saturday Movie <b>CD</b>
<b>6</b> 10:00 Holy Eucharist <b>CH</b> 2:15 Sunday Movie <b>CD</b> 3:00 Bingo <b>YL</b>	<b>7</b> 11:00 Stretch & Strengthen <b>CD</b> 1:00 Music Therapy <b>RR</b> 2:00 Humberto Sierralta <b>MLR</b>	<b>8</b> 11:00 Walking Club <b>CL</b> 1:30 Manicures <b>RR</b> 3:00 <b>KC Symphony String Quartet MLR</b> 6:00 Game Night <b>YL</b>	<b>9</b> 11:00 Stretch & Strengthen <b>CD</b> 1:00 Pets For Life <b>RR</b> 1:30 Prayer Group <b>CD</b> 3:00 Dominoes <b>TR</b>	<b>10</b> 11:00 Walking Club <b>CL</b> 1:30 Bridge <b>TR</b> 3:00 Needlework Hour <b>CL</b> 6:30 Bingo <b>YL</b>	<b>11</b> 10:30 Resident Council <b>CD</b> 11:00 Stretch & Strengthen <b>CD</b> 1:30 Chair Volleyball <b>WR</b> 3:00 Sam Wisman Trio <b>MLR</b>	<b>12</b> 10-12 Librarian Hours <b>WR</b> 11:00 Exercise <b>CD</b> 1:30 Pets for Life <b>RR</b> 2:00 Saturday Movie <b>CD</b>
Mother's Day <b>13</b> 10:00 Holy Eucharist <b>CH</b> 2:15 Sunday Movie <b>CD</b> 3:00 Bingo <b>YL</b>	<b>14</b> 11:00 Stretch & Strengthen <b>CD</b> 1:00 Music Therapy <b>RR</b> 3:00 Dominoes <b>TR</b>	<b>15</b> 10:00 Coffee & Donuts <b>CL</b> 11:00 Walking Club <b>CL</b> 1:30 Manicures <b>RR</b> 3:30 Bingo <b>CD</b> 6:00 Game Night <b>YL</b>	<b>16</b> 9:30 Catholic Mass <b>CH</b> 11:00 Stretch & Strengthen <b>CD</b> 11:00 Café Hope <b>CH</b> 1:30 Prayer Group <b>CD</b> 3:00 Pianist Lenn Anderson <b>YL</b>	<b>17</b> 10:00 Scuola Vita Nuova Bands <b>CDR</b> 11:00 Walking Club <b>CD</b> 1:00 Himalayan Eugene <b>RR</b> 2:30 Movie   Whale Rider <b>WR</b> 3:00 Needlework Hour <b>CL</b> 6:30 Bingo <b>YL</b>	<b>18</b> 9:30 Baking Club <b>TR</b> 11:00 Stretch & Strengthen <b>CD</b> 1:30 Engage at Every Age Celebration <b>CDR</b> 3:00 Harpsichordist Nicholas Good <b>CH</b>	<b>19</b> 10-12 Librarian Hours <b>WR</b> 11:00 Exercise <b>CD</b> 1:30 Pets for Life <b>RR</b> 2:00 Saturday Movie <b>CD</b>
<b>20</b> 10:00 Holy Eucharist <b>CH</b> 2:15 Sunday Movie <b>CD</b> 3:00 Bingo <b>YL</b>	<b>21</b> 11:00 Stretch & Strengthen <b>CD</b> 3:00 Guitarist Jerry Uppman <b>YL</b>	<b>22</b> 11:00 Walking Club <b>CL</b> 1:30 Manicures <b>RR</b> 3:00 Bingo with Cindy <b>YL</b> 6:00 Game Night <b>YL</b>	<b>23</b> 11:00 Stretch & Strength <b>CD</b> 1:00 Pets For Life <b>RR</b> 1:30 Prayer Group <b>CD</b> 3:00 Classical Duo Chun-Chien Chuang & John Villaveces <b>MLR</b>	<b>24</b> 11:00 Walking Club <b>CL</b> 3:00 Word Game with Cindy <b>CD</b> 6:30 Bingo <b>YL</b>	<b>25</b> 11:00 Stretch and Strengthen <b>CD</b> 4:30 Cocktail Hour with Pianist Roger Wilder <b>MLR</b>	<b>26</b> 10-12 Librarian Hours <b>WR</b> 11:00 Exercise <b>CD</b> 1:30 Pets for Life <b>RR</b> 2:00 Saturday Movie <b>CD</b>
<b>27</b> 10:00 Holy Eucharist <b>CH</b> 2:00 Grace Kohan's Student Recital <b>MLR</b> 2:15 Sunday Movie <b>CD</b> 3:00 Bingo <b>YL</b>	Memorial Day <b>28</b> <b>OFFICES CLOSED</b> 3:00 Pianist Donna Maddox <b>YL</b>	<b>29</b> 11:00 Walking Club <b>CL</b> 1:30 Manicures <b>RR</b> 3:30 Bingo <b>CD</b> 6:00 Game Night <b>YL</b>	<b>30</b> 11:00 Stretch & Strength <b>CD</b> 1:00 Pets For Life <b>RR</b> 1:30 Prayer Group <b>CD</b> 1:30 City of Fountains Tour <i>Bus departs from York at 2:00</i>	<b>31</b> 11:00 Walking Club <b>CL</b> 1:30 Bridge <b>TR</b> 3:00 Needlework Hour <b>CL</b> 6:30 Bingo <b>YL</b>		



# MAY 2018

SUNDAY	MONDAY	TUESDAY	WEDNESDAY	THURSDAY	FRIDAY	SATURDAY
<b>A</b> Abbey <b>CD</b> Coventry Dining Room <b>CDR</b> Canterbury Dining Room <b>CH</b> Chapel <b>CL</b> Coventry Living Room		<b>MLR</b> Madison Living Room <b>RR</b> Room to Room <b>TR</b> Therapy Room <b>YD</b> York Dining Room <b>YL</b> York Lounge				
		<b>1</b> 10:00 May Day Baskets <b>YL</b> 1:30 Devotions <b>YD</b> 3:00 Bingo <b>YD</b> 6:00 Game Night <b>YL</b>	<b>2</b> 9:30 Catholic Mass <b>CH</b> 10:00 Music Moves <b>YL</b> 10:30 Current News <b>YL</b> 1:00 Pets For Life <b>RR</b> 3:00 Lenn Anderson on Piano <b>YL</b>	<b>3</b> 10:00 Music Moves <b>YL</b> 10:30 Current News <b>YL</b> 1:30 Himalayan Eugene <b>RR</b> 3:00 Word Games <b>YL</b> 6:30 Bingo Night <b>YL</b>	<b>4</b> 10:00 Music Moves <b>YL</b> 10:30 Current News <b>YL</b> <b>11-1</b> <b>Cinco de Mayo</b> <b>Lunch P and CDR</b> 1:30 Arts & Crafts <b>YL</b> <b>3:00</b> <b>Musician Danny Embrey MLR</b>	<b>5</b> <b>Cinco de Mayo</b> 10:15 Music Moves <b>YL</b> 1:30 Pets for Life <b>RR</b> 2:30 Board Games <b>YL</b> 3:15 Saturday Afternoon Adventure <b>YL</b>
<b>6</b> 10:00 Holy Eucharist <b>CH</b> 1:30 Praise & Worship <b>YD</b> 3:00 Bingo <b>YD</b>	<b>7</b> 10:00 Music Moves <b>YL</b> 10:30 Current News <b>YL</b> 1:30 Manicures <b>RR</b> <b>2:00</b> <b>Humberto Sierralta MLR</b>	<b>8</b> 10:00 Music Moves <b>YL</b> 10:30 Current News <b>YL</b> 1:30 Devotions <b>YD</b> 3:00 Bingo <b>YD</b> 6:00 Game Night <b>YL</b>	<b>9</b> 10:00 Music Moves <b>YL</b> 10:30 Current News <b>YL</b> 1:00 Pets For Life <b>RR</b> 1:45 Wheelchair Volleyball <b>YD</b>	<b>10</b> 10:00 Music Moves <b>YL</b> 10:30 Current News <b>YL</b> 1:30 Bridge <b>TR</b> 2:30 Pie of the Month <b>YD</b> 6:30 Bingo Night <b>YL</b>	<b>11</b> 10:00 Music Moves <b>YL</b> 10:30 Current News <b>YL</b> 1:30 Resident Council A <b>3:00</b> <b>Sam Wisman Trio MLR</b>	<b>12</b> 10:15 Music Moves <b>YL</b> 1:30 Pets for Life <b>RR</b> 2:30 Board Games <b>YL</b> 3:15 Saturday Afternoon Adventure <b>YL</b>
<b>Mother's Day 13</b> 10:00 Holy Eucharist <b>CH</b> 1:30 Praise & Worship <b>YD</b> 2:00 New Pet Visitor <b>RR</b> 3:00 Bingo <b>YD</b>	<b>National Skilled Nursing Care Week 14</b> 10:00 Music Moves <b>YL</b> 10:30 Current News <b>YL</b> 1:30 Manicures <b>RR</b> 3:00 Pianist Donna Maddox <b>YL</b>	<b>15</b> 10:00 Music Moves <b>YL</b> 10:30 Current News <b>YL</b> 1:30 Devotions <b>YD</b> 3:00 Dollar Bingo Bash <b>YD</b> 6:00 Game Night <b>YL</b>	<b>16</b> 9:30 Catholic Mass <b>CH</b> 10:00 Music Moves <b>YL</b> 10:30 Current News <b>YL</b> 1:00 Pets For Life <b>RR</b> 3:00 Lenn Anderson on Piano <b>YL</b>	<b>17</b> <b>10:00</b> <b>Scuola Vita Nuova Bands CDR</b> 10:30 Humor in a Box <b>YL</b> 1:30 Himalayan Eugene <b>RR</b> 3:00 Gift Bag Challenge <b>YL</b> 6:30 Bingo Night <b>YL</b>	<b>18</b> 10:00 Music Moves <b>YL</b> 10:30 Current News <b>YL</b> <b>1:30</b> <b>Engage at Every Age Celebration   Entertainment by Ken Page CA</b>	<b>19</b> 10:15 Music Moves <b>YL</b> 1:30 Pets for Life <b>RR</b> 2:30 Board Games <b>YL</b> 3:15 Saturday Afternoon Adventure <b>YL</b>
<b>20</b> 10:00 Holy Eucharist <b>CH</b> 1:30 Praise & Worship <b>YD</b> 3:00 Bingo <b>YD</b>	<b>21</b> 10:00 Music Moves <b>YL</b> 10:30 Current News <b>YL</b> 1:30 Manicures <b>RR</b> 3:00 Guitar & Vocals   Jerry Uppman <b>YL</b>	<b>22</b> 10:00 Music Moves <b>YL</b> 10:30 Current News <b>YL</b> 1:30 Devotions <b>YD</b> 3:00 Bingo <b>YD</b> 6:00 Game Night <b>YL</b>	<b>23</b> 9:30 Catholic Mass <b>CH</b> 10:00 Music Moves <b>YL</b> 1:00 Pets For Life <b>RR</b> <b>3:00</b> <b>Classical Duo Chun-Chien Chuang &amp; John Villaveces MLR</b>	<b>24</b> 10:00 Music Moves <b>YL</b> 10:30 Current News <b>YL</b> 2:30 Word Games <b>YL</b> 6:30 Bingo Night <b>YL</b>	<b>25</b> 10:00 Music Moves <b>YL</b> 10:30 Current News <b>YL</b> 2:30 Happy Hour <b>YL</b>	<b>26</b> 10:15 Music Moves <b>YL</b> 1:30 Pets for Life <b>RR</b> 2:30 Board Games <b>YL</b> 3:15 Saturday Afternoon Adventure <b>YL</b>
<b>27</b> 10:00 Holy Eucharist <b>CH</b> 1:30 Praise & Worship <b>YD</b> 2:00 New Pet Visitor <b>RR</b> 3:00 Bingo <b>YD</b>	<b>Memorial Day 28</b> <b>OFFICES CLOSED</b> 3:00 Pianist Donna Maddox <b>YL</b>	<b>29</b> 10:00 Music Moves <b>YL</b> 10:30 Current News <b>YL</b> 1:30 Devotions <b>YD</b> 3:00 Bingo <b>YD</b> 6:00 Game Night <b>YL</b>	<b>30</b> 10:00 Music Moves <b>YL</b> 10:30 Current News <b>YL</b> 1:00 Pets For Life <b>RR</b> 1:30 City of Fountains Tour <b>Bus departs York at 2:00</b>	<b>31</b> 10:00 Music Moves <b>YL</b> 10:30 Current News <b>YL</b> 1:30 Bridge <b>TR</b> 2:30 Ice Cream Cart <b>RR</b> 6:30 Bingo Night <b>YL</b>		



### **Nicholas Good | Harpsichord**

**Friday, May 18, 3:00 p.m.**  
**Chapel of the Epiphany**

Harpsichord soloist, continuo player, and organist Nicholas Good tours with Kansas Arts on Tours, presenting concerts in local communities. In addition to concerts in Kansas, the group has performed Bach concertos in Minnesota and a program of Diderik Buxtehude's music for the Midwest Historical Keyboard Society in Iowa City.



### **ART BLOCKS | Donna Houtteman**

**Monday, May 21, 3:00 p.m.**  
**Westport Room**

Donna's back! Join her for this month's Art Blocks. This month's topic: Neoclassicism.

Donna Houtteman is the leading voice behind the Art Sofa Series for Continuing and Professional Studies at the Kansas City Art Institute. Although she doesn't call herself an art historian, her passion for art and the history in which it was made is contagious.



### **Speaker Series | Wendy Doyle**

**Thursday, May 24, 3:00 p.m.**  
**Westport Room**

Wendy Doyle is President & CEO of the Women's Foundation of Greater Kansas City. The mission of the foundation is to promote equity and opportunity for women of all ages, using research, philanthropy, and policy solutions to make meaningful change. The Women's Foundation addresses issues affecting the economic well-being of women and their families with the goal of eliminating barriers women face in achieving long-term economic self-sufficiency.



### **Jan Kraybill | Organ Recital & Hymn Festival | Village Presbyterian**

**Friday, May 18**  
**BSP bus departs at 6:30 p.m.**

Join us for an organ recital and hymn festival by BSP friend Dr. Jan Kraybill, organ conservator at the Kauffman Center for the Performing Arts. Dr. Kraybill served as organ consultant for the construction of the new Village Presbyterian Church pipe organ. The recital is one of a series of organ dedication concerts to celebrate the new organ.

**Sign up with the concierge.**



### **Classical Duo Chun-Chien Chuang and John Villaveces**

**Wednesday, May 23, 3:00 p.m.**  
**Madison Living Room**

Violinist Chun-Chien Chuang, concertmaster of the Saint Joseph Symphony, has performed in the U.S., Europe, and Taiwan. Her husband, pianist John Villaveces, is professor and collaborative pianist at the University of Central Missouri, as well as music director at St. John LaLande in Blue Springs.



### **Grace Kohan's Student Recital**

**Sunday, May 27, 2:00 p.m.**  
**Madison Living Room**

Celebrated local piano teacher Grace Kohan returns with her students, who will perform special selections at varying degrees of difficulty. You won't want to miss this performance!



# Chaplain's CORNER

In 1952, Congress passed a bill calling upon the President to set aside a National Day of Prayer. President Truman signed that bill, which President Reagan amended in 1988 to designate the first Thursday of May as the date of this annual observance—that's May 3 this year!

Long before Give 'em Hell, Harry or the Gipper called for a national day of prayer, the Continental Congress did something similar, circa 1775, as did President Lincoln in 1863. At various times throughout our history, there have been calls for people of all faiths to pray for our nation and its leaders.

God knows, our nation and its leaders could use the help! We are a nation of diverse faiths and spiritual paths, but each of us can pray, in our own way, for our nation and its leaders. And since we're all in this together, we might pray for the rest of the nations and their leaders as well.

*How good and how pleasant it is when kindred live [and pray] together in unity (Ps. 133.1)*

—Chaplain Kathy Hall

## Roman Catholic Mass

**Father Mattingly** | Wednesday, May 2 | 9:30 a.m. | Chapel

**Father Bob** | Wednesday, May 16 | 9:30 a.m. | Chapel

## Bible Study

We will meet on **Tuesdays at 11:00 a.m.** in the Chapel. We are working our way through the Gospel of Luke and the Acts of the Apostles. All are welcome!

## Good Books

Memorial Day falls on the 4th Monday of the month, our usual meeting date, so we will meet on **Tuesday, May 29**, instead, at 3:00 p.m. in the Chapel. We will be reading *A Man Called Ove*, by Fredrik Backman, which is available in print, electronic, and CD formats. Please join us!

## Fabulous Food for Thought

If you have food in the refrigerator, clothes on your back, a roof overhead, and a place to sleep, you are richer than 75% of this world.



## The Great Courses | From Monet to Van Gogh: A History of Impressionism

**Wednesday, May 30, 3:00 p.m.**  
**Westport Room**

Join us for our new Great Courses series, *From Monet to Van Gogh: A History of Impressionism*. Professor Richard Brettell gives insight into the artists who rebelled against the formality of the French Academy and created the most famous artistic movement in history.



## Johnny Carson Classics

**Thursday, May 31, 3:00 p.m.**  
**Westport Room**

Come laugh and relive the best moments of *The Tonight Show Starring Johnny Carson* from the first of three DVDs that compile some of his funniest interviews, best performances, and most popular guests.

## MEMORIAL DAY

**Monday, May 28**

Offices, Salon, & Bistro Closed

**11:00 a.m.-1:00 p.m.**

**Canterbury Dining Room**

Holiday Lunch

# HAPPY



# BIRTHDAY

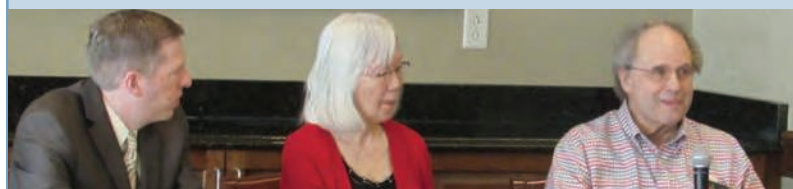
**Tanya Palmer**, May 6  
**Dorothy Plattner**, May 7  
**Mary Abbott**, May 16  
**Bess LeFevre**, May 17  
**Sandy Lambert**, May 18  
**Dwight Householter**, May 21  
**Pat Russell**, May 23  
**Inge Brooks**, May 24  
**Midori Houston**, May 24  
**Martha Ball**, May 27  
**Dahlgren McElwain**, May 28  
**Janet McCrary**, May 30

## MAGAZINES



If you have any popular, current magazines you would like to share with the Madison Library, please give to the Madison concierge.

## WESTPORT LIBRARY UPDATE



On Saturdays from 10:00 a.m. to 12:00 p.m., Westport Librarian Dr. Jeffrey Weidman will be available to provide any assistance.



## Garden TIME

Tiptoe carefully through our tulips! We have friends nearby. If you wander off the sidewalks, you may see a pair of our happy robins nesting on the ground. You will also see the green tips of future flowers anxiously pushing through the mulch. Carefully use a trowel to remove any dandelions! Thanks!

We held our April Garden Committee meeting in our garden and discussed plans for filling in bare spots. We planted Missouri flowers late last month. The Missouri Wildflowers Nursery will return on May 19 for possible additional purchases.

Did you receive blooming bulbs for the holidays? They can be saved for planting in our garden this autumn. One resident gave us her hyacinths last year and look how well they survived, blissfully ignoring three April snow days!

—Bobbie Ellis

## PLAZA LIBRARY

**Thursday, May 31**  
BSP bus departs 2:45 p.m.,  
returns for pickup at 4:00 p.m.

Sign up with the concierge.

## CINCO DE MAYO

**Friday, May 4, 11:00 a.m.-1:00 p.m.**  
**Pub and Canterbury Dining Room**

The BSP Passion Team will host a Cinco De Mayo lunch for residents and staff. See you there!





## *Cocktail Hour*

### WITH PIANIST ROGER WILDER

Friday, May 25, 4:30 p.m.

Madison Living Room | Canterbury Dining Room

Roger will perform while wine is served, 4:30–6:00 p.m.

Listen while you sit in the Pub, dine in the Canterbury Dining Room, or enjoy wine and cocktails in the Madison Living Room. Daily special and full dinner menu is available, also with complimentary drinks.

