

The background of the cover is a photograph of the entrance to Bishop Spencer Place. The building has a red-tiled roof and a prominent steeple with a cross on top. A sign above the entrance reads "BISHOP SPENCER PLACE". A security camera is mounted on the wall to the left of the entrance. A wooden bench is visible in the foreground. The sky is blue with some clouds.

# *The* AMBASSADOR

BISHOP SPENCER PLACE

FEBRUARY 2018

 **Saint Luke's**  
BISHOP SPENCER PLACE

## ACTIVITY KEY



**Celebration**



**Movie**



**Theatre**



**Arts**



**Music**



**Nature**



**Excursion**



**Speaker**



**Cocktails**



**Dining**



**Coffee & Conversation**



**Class**



### Speaker Series | Steve Miller

Thursday, February 1, 3:00 p.m.  
Westport Room

Steve Miller, relative of a BSP resident, recently announced his bid to run for mayor of Kansas City, Missouri. Steve, a long-time Kansas City lawyer, served on the Missouri Highways and Transportation Committee for seven years. He will share his campaign platform.



### Movie Classic with Robert Butler | Cabaret

Friday, February 2, 2:00 p.m.  
Westport Room

In the 1972 film *Cabaret*, based on the Broadway musical, an American singer romances two men while performing in the Kit Kat Klub in 1931 Berlin as the Nazis are rising to power. The film, directed by Bob Fosse, stars Liza Minnelli, Michael York, and Joel Grey.



### 2018 WINTER OLYMPICS | PYEONGCHANG

Opening Ceremonies | Friday, February 9

Watch your favorite Olympic winter competitions on the NBC networks. Here are the opening dates of popular sports.

<b>Ski Jumping</b>	Feb. 8	<b>Snowboarding</b>	Feb. 10
<b>Figure Skating</b>	Feb. 9	<b>Speed Skating</b>	Feb. 10
<b>Freestyle Skiing</b>	Feb. 9	<b>Alpine Skiing</b>	Feb. 11
<b>Hockey</b>	Feb. 10	<b>Nordic Combined</b>	Feb. 14
<b>Luge</b>	Feb. 10	<b>Skeleton</b>	Feb. 15
<b>Short Track</b>	Feb. 10	<b>Bobsled</b>	Feb. 18



This is a monthly magazine for residents of Saint Luke's Bishop Spencer Place.

**Bishop Spencer Place** ♦ 4301 Madison Ave., Kansas City, MO 64111





## BSP Super Bowl Watch Party

Sunday, February 4, 5:30 p.m.  
Westport Room | BYOB

Join us for the BSP Super Bowl Party! Food will be catered by our own Frank Macaluso (16 points).

**Tickets must be presented for the buffet meal. Please sign up by February 1 and receive a ticket from a concierge.**



## Speaker Series | Dr. Brandon Pomeroy

Tuesday, February 6, 3:00 p.m.  
Westport Room

Saint Luke's urologist Dr. Brandon Pomeroy will join us to discuss his novels *As It Is*, *When It Was* and *In My Time of Need* and non-fiction book *Grace Upon Grace: The Story of Ibrahima Kodio and a Remarkable School in West Africa*.

Dr. Pomeroy has traveled to Uganda, Mali, and India on medical missions and is a co-founder of Grace Missions, Inc., which provides financial and prayer support for a Christian primary school in Mali.



## Toy & Miniature Museum

Wednesday, February 7  
BSP bus departs at 1:00 p.m.

The National Museum of Toys and Miniatures opened in 1982 as the Toy and Miniature Museum of Kansas City, featuring the collections of Mary Harris Francis and Barbara Marshall. Over the next 30 years, the museum grew and the collection increased to over 72,000 objects.

Join us for a docent-led tour of this delightful Kansas City treasure.

**Sign up with the concierge.**



## Spirituality & All That Jazz

Wednesday, February 7  
BSP bus departs at 6:30 p.m.

Join us at Unity Temple on the Plaza for *Spirituality & All That Jazz*, a monthly showcase of the incredible wealth of local Kansas City Jazz talent. This month, vocalist Ron Gutierrez performs with host Tim Whitmer and The Consort Band.

**Sign up with the concierge.**

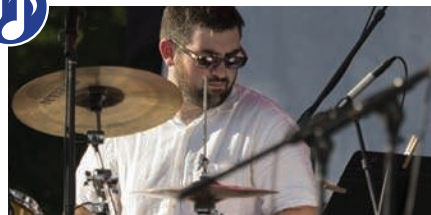


## Lunch Out at Rye

Thursday, February 8  
BSP bus departs at 11:15 a.m.

Since the weather kept us from lunching at Rye in January, we'll try it again! Rye on the Country Club Plaza celebrates the foods the Midwest is known for—pork chops, steaks, fried chicken, pies, cobblers, and specialty cakes—using local ingredients.

**Sign up with the concierge by February 5th so we can reserve the BSP bus!**



## Sam Wisman Trio

Thursday, February 8, 3:00 p.m.  
Madison Living Room

Jazz drummer Sam Wisman graduated cum laude from UMKC Conservatory of Music and has performed with such diverse groups and musicians as Marimba Sol de Chiapas, Bobby Watson, the People's Liberation Big Band, and the Kansas City Symphony. He has also worked extensively as a percussionist in musical theater, including the Kansas City Repertory Theater, New Theatre Restaurant, and the Coterie Theater. You can listen to Sam as a DJ for Jazz Afternoon on 90.1 FM KKFI.



### Metropolitan Opera at the Plaza Cinemark | *L'Elisir D'Amore*

Saturday, February 10  
BSP bus departs at 10:15 a.m.

Enjoy the Met's Live in HD movie-theater transmission of Gaetano Donizetti's comic opera *L'Elisir D'Amore*, about a poor peasant who buys a love potion from a traveling salesman to try to win the heart of the beautiful, wealthy woman he loves.

Sign up with the concierge.



### Lunch & Learn | Turning Points in Middle Eastern History

Monday, February 12, 11:30 a.m.  
Westport Room

Join us for two 30-minute talks from the Great Courses DVD series *Turning Points in Middle Eastern History*, followed by a group discussion.

**Lunch will be provided (for ten points). Please sign up with the concierge by Saturday, February 10, to reserve your lunch and allow PB&J Restaurants time to prepare.**



### Speaker Series | Jean Peters Baker

Thursday, February 15, 3:00 p.m.  
Westport Room

Jean Peters Baker spent more than 15 years in the Jackson County Prosecutor's Office before she was appointed prosecutor in May 2011 and elected to the position in November 2012. She is only the second woman elected to lead the office. The first, now-U.S. Sen. Claire McCaskill, hired Jean as a young assistant prosecutor.

Jean's focus has been to make Jackson County a safer and better place to live, work, and raise a family.



### Doug Talley Quartet

Sunday, February 11, 1:30 p.m.  
Madison Living Room

Formed in 1995, the Doug Talley Quartet has performed at numerous festivals, concerts, clubs, and schools throughout the Midwest. All four members of the quartet—Wayne Hawkins (piano), Tim Brewer (bass), Doug Talley (saxophone), and Keith Kavanaugh (drums/cymbals)—compose and arrange music, as well as contribute to the group's repertoire for recordings and live appearances.



### Valentine's Day with Tim Whitmer

Wednesday, February 14  
3:00 p.m.  
Madison Living Room

Tim Whitmer carries on the tradition of Kansas City jazz with his inventive treatment of standards and fanciful original compositions. Tim has led a series of renowned bands, drawn from local jazz legends and talented young players. Join us for a special Valentine's Day performance with Tim.



### QuaTriDuo

Friday, February 16, 3:00 p.m.  
Madison Living Room

As the name implies, QuaTriDuo creates different chamber music ensembles by combining their instruments in various ways. While the majority of their repertoire falls into the category of light classical music, they do toss in the occasional tango!





# FEBRUARY 2018

SUNDAY	MONDAY	TUESDAY	WEDNESDAY	THURSDAY	FRIDAY	SATURDAY
<b>A</b> Abbey <b>CD</b> Coventry Dining Room <b>CDR</b> Canterbury Dining Room <b>CH</b> Chapel <b>CL</b> Coventry Living Room		<b>MLR</b> Madison Living Room <b>RR</b> Room to Room <b>TR</b> Therapy Room <b>YD</b> York Dining Room <b>YL</b> York Lounge				
				<b>1</b> 10:30 Scrabble <b>CD</b> 1:00 Himalayan Eugene <b>RR</b> 3:00 Needlework Hour <b>CL</b>	<b>2</b> Groundhog Day 11:00 Stretch and Strengthen <b>CD</b> 2:00 Movie <b>CD</b>	<b>3</b> 11:00 Exercise <b>CD</b> 1:30 Pets for Life <b>RR</b> 2:00 Saturday Movie <b>CD</b>
<b>4</b> 10:00 Holy Eucharist <b>CH</b> 2:15 Sunday Movie <b>CD</b> 3:00 Bingo <b>YD</b>	<b>5</b> 11:00 Stretch and Strengthen <b>CD</b> 1:00 Music Therapy <b>RR</b> 3:00 Dominoes <b>TR</b>	<b>6</b> 11:00 Walking Club <b>CD</b> 1:30 Manicures <b>RR</b> 3:30 Bingo <b>CD</b> 5:30 Music Magic <b>YL</b>	<b>7</b> 9:30 Catholic Mass <b>CH</b> 11:00 Stretch & Strengthen <b>CD</b> 1:00 Pets For Life <b>RR</b> 1:30 Prayer Group <b>CD</b> 3:00 Lenn Anderson on Piano <b>YL</b>	<b>8</b> 11:00 Stretch and Strengthen <b>CD</b> 3:00 Sam Wisman Trio <b>MLR</b> 6:30 Bingo <b>YL</b>	<b>9</b> Olympic Opening Ceremonies 10:30 Baking Club <b>TR</b> 2:00 Resident Council <b>CD</b>	<b>10</b> 11:00 Chair Yoga <b>CD</b> 1:30 Pets for Life <b>RR</b> 2:00 Saturday Movie <b>CD</b>
<b>11</b> 10:00 Holy Eucharist <b>CH</b> 1:30 Doug Talley Quartet <b>MLR</b> 2:15 Sunday Movie <b>CD</b> 3:00 Bingo <b>YD</b>	<b>12</b> 11:00 Stretch and Strengthen <b>CD</b> 1:00 Music Therapy <b>RR</b> 3:00 Art Class   Card Making <b>TR</b>	<b>13</b> 10:30 Walking Club <b>CD</b> 3:30 Bingo <b>CD</b> 5:30 Music Magic <b>YL</b>	<b>14</b> Ash Wednesday Valentine's Day 11:00 Stretch & Strengthen <b>CD</b> 1:30 Prayer Group <b>CD</b> 3:00 Valentine's Day with Tim Whitmer <b>MLR</b>	<b>15</b> 10:30 Scrabble <b>CD</b> 1:00 Himalayan Eugene <b>RR</b> 3:00 Needlework Hour <b>CL</b> 6:30 Bingo <b>YL</b>	<b>16</b> 11:00 Stretch and Strengthen <b>CD</b> 3:00 QuaTriDuo <b>MLR</b>	<b>17</b> 11:00 Exercise <b>CD</b> 1:30 Pets for Life <b>RR</b> 1:30 Young Audiences Performances <b>MLR</b> 2:00 Saturday Movie <b>CD</b>
<b>18</b> 10:00 Holy Eucharist <b>CH</b> 2:15 Sunday Movie <b>CD</b> 3:00 Bingo <b>YD</b>	<b>19</b> President's Day 11:00 Stretch and Strengthen <b>CD</b> 1:00 Music Therapy <b>RR</b> 3:00 Dominoes <b>TR</b>	<b>20</b> 11:00 Walking Club <b>CD</b> 1:30 Manicures <b>RR</b> 3:30 Bingo <b>CD</b> 5:30 Music Magic <b>YL</b>	<b>21</b> 9:30 Catholic Mass <b>CH</b> 11:00 Stretch & Strengthen <b>CD</b> 11:00 Café Hope <b>CH</b> 1:30 Prayer Group <b>CD</b> 1:00 Pets For Life <b>RR</b> 3:00 Lenn Anderson <b>YL</b>	<b>22</b> 11:00 Stretch and Strengthen <b>CD</b> 3:00 Needlework Hour <b>CL</b> 6:30 Bingo <b>YL</b>	<b>23</b> 11:00 Baking Club <b>TR</b> 3:00 Black History Month Celebration <b>YL</b> 5:00 Cocktail Hour with Pianist Don Hatfield <b>MLR</b>	<b>24</b> 11:00 Chair Yoga <b>CD</b> 1:30 Pets for Life <b>RR</b> 2:00 Saturday Movie <b>CD</b>
<b>25</b> 10:00 Holy Eucharist <b>CH</b> 2:15 Sunday Movie <b>CD</b> 3:00 Bingo <b>YD</b>	<b>26</b> 11:00 Stretch and Strengthen <b>CD</b> 1:00 Music Therapy <b>RR</b> 3:30 Art Class <b>TR</b>	<b>27</b> 11:00 Walking Club <b>CD</b> 3:30 Bingo <b>CD</b> 5:30 Music Magic <b>YL</b>	<b>28</b> 11:00 Stretch & Strengthen <b>CD</b> 1:00 Pets For Life <b>RR</b> 1:30 Prayer Group <b>CD</b> 3:00 Happy Hour <b>CD</b>			

# FEBRUARY 2018

SUNDAY	MONDAY	TUESDAY	WEDNESDAY	THURSDAY	FRIDAY	SATURDAY
<b>A</b> Abbey <b>CD</b> Coventry Dining Room <b>CDR</b> Canterbury Dining Room <b>CH</b> Chapel <b>CL</b> Coventry Living Room <b>MLR</b> Madison Living Room <b>RR</b> Room to Room <b>TR</b> Therapy Room <b>YD</b> York Dining Room <b>YL</b> York Lounge						
				<b>1</b> 10:00 Exercise <b>YL</b> 10:30 Current News <b>YL</b> 1:30 Himalayan Eugene <b>RR</b> 3:00 Word Games <b>YL</b> 6:30 Bingo Night <b>YL</b>	<b>2</b> Groundhog Day 10:00 Music Moves <b>YL</b> 10:30 Current News <b>YL</b> 1:30 Famous Couples <b>YL</b> 3:00 Country Singer Charles Bain <b>YD</b>	<b>3</b> 10:15 Music Moves <b>YL</b> 1:30 Pets for Life <b>RR</b> 2:30 Saturday Afternoon Adventure <b>YL</b>
<b>4</b> 10:00 Holy Eucharist <b>CH</b> 1:30 Praise & Worship <b>YD</b> 3:00 Bingo <b>YL</b> 5:30 Super Bowl LII <b>YL</b>	<b>5</b> 10:00 Coffee Klatch <b>YL</b> 1:30 Manicures <b>RR</b> 3:00 Movie Matinee <b>YL</b>	<b>6</b> 10:00 Music Moves <b>YL</b> 1:30 Devotions <b>YD</b> 3:00 Bingo <b>YD</b> 5:30 Music Magic <b>YL</b>	<b>7</b> 9:30 Catholic Mass <b>CH</b> 10:00 Music Moves <b>YL</b> 10:30 Current News <b>YL</b> 1:00 Pets For Life <b>RR</b> 3:00 Lenn Anderson on Piano <b>YL</b>	<b>8</b> 10:00 Exercise <b>YL</b> 10:30 Current News <b>YL</b> 1:30 Crafts—Love Notes Door Decor <b>YL</b> 3:00 Sam Wisman Trio <b>MLR</b>	<b>9</b> Olympic Opening Ceremonies 9:30 Carlisle Home School Program <b>YL</b> 1:30 Resident Council A 3:00 Musician Steve Barrett <b>YL</b>	<b>10</b> 10:15 Music Moves <b>YL</b> 1:30 Pets for Life <b>RR</b> 2:30 Saturday Afternoon Adventure <b>YL</b>
<b>11</b> 10:00 Holy Eucharist <b>CH</b> 1:30 Doug Talley Quartet <b>MLR</b> 1:30 Praise & Worship <b>YD</b> 3:00 Bingo <b>YL</b>	<b>12</b> 10:00 Coffee Klatch <b>YL</b> 1:30 Manicures <b>RR</b> 3:00 Pianist Donna Maddox <b>YL</b>	<b>13</b> 10:00 Music Moves <b>YL</b> 1:30 Devotions <b>YD</b> 3:00 Bingo <b>YD</b> 5:30 Music Magic <b>YL</b> 6:45 Movie Night <b>YL</b>	<b>14</b> Ash Wednesday Valentine's Day 10:00 Music Moves <b>YL</b> 1:00 Pets For Life <b>RR</b> 2:00 Chocolate Fountain <b>YL</b> 3:00 Tim Whitmer <b>MLR</b>	<b>15</b> 10:00 Exercise <b>YL</b> 10:30 Current News <b>YL</b> 1:30 Himalayan Eugene <b>RR</b> 3:00 Olympic Games <b>YL</b> 6:30 Bingo Night <b>YL</b>	<b>16</b> 10:00 Music Moves <b>YL</b> 10:30 Current News <b>YL</b> 1:30 Crafts—Backyard Bird Feeders <b>YL</b> 3:00 QuaTriDuo <b>MLR</b>	<b>17</b> 10:15 Music Moves <b>YL</b> 1:30 Pets for Life <b>RR</b> 1:30 Young Audiences Performance <b>MLR</b> 2:30 Saturday Afternoon Adventure <b>YL</b>
<b>18</b> 10:00 Holy Eucharist <b>CH</b> 1:30 Praise & Worship <b>YD</b> 3:00 Bingo <b>YL</b>	<b>19</b> President's Day 10:00 Coffee Klatch <b>YL</b> 1:30 Manicures <b>RR</b> 2:30 Cherry Pie of the Month Club <b>YD</b> 5:30 Presidential Trivia <b>YD</b>	<b>20</b> 10:00 Music Moves <b>YL</b> 1:30 Devotions <b>YD</b> 3:00 Bingo <b>YD</b> 5:30 Music Magic <b>YL</b>	<b>21</b> 9:30 Catholic Mass <b>CH</b> 10:00 Music Moves <b>YL</b> 10:30 Current News <b>YL</b> 1:00 Pets For Life <b>RR</b> 3:00 Lenn Anderson on Piano <b>YL</b>	<b>22</b> 10:00 Exercise <b>YL</b> 10:30 Current News <b>YL</b> 2:30 Olympic Games <b>YL</b> 6:30 Bingo Night <b>YL</b>	<b>23</b> 9:30 Carlisle Home School Program <b>YL</b> 3:00 Black History Month Celebration <b>YL</b>	<b>24</b> 10:15 Music Moves <b>YL</b> 1:30 Pets for Life <b>RR</b> 2:30 Saturday Afternoon Adventure <b>YL</b>
<b>25</b> 10:00 Holy Eucharist <b>CH</b> 1:30 Praise & Worship <b>YD</b> 3:00 Bingo <b>YL</b>	<b>26</b> 10:00 Coffee Klatch <b>YL</b> 1:30 Manicures <b>RR</b> 3:00 Pianist Donna Maddox <b>YL</b>	<b>27</b> 10:00 Music Moves <b>YL</b> 1:30 Devotions <b>YD</b> 3:00 Bingo <b>YD</b> 5:30 Music Magic <b>YL</b> 6:45 Movie Night <b>YL</b>	<b>28</b> 10:00 Music Moves <b>YL</b> 10:30 Current News <b>YL</b> 1:00 Pets For Life <b>RR</b> 3:00 Happy Hour <b>YL</b>			





## Kansas City Young Audiences

Saturday, February 17, 1:30 p.m.  
Madison Living Room

Kara Armstrong is the Director of Arts Education for Kansas City Young Audiences, established as a non-profit agency in 1961 by a group of dedicated volunteers to provide children in Kansas City schools an opportunity to see and hear classical music. Join us for a delightful KCYA performance.



## Speaker Series | Gloria Haralson Smith

Tuesday, February 20, 3:00 p.m.  
Westport Room

Gloria Haralson Smith was born in Independence and has lived in that city nearly all her life. Her family has lived in Jackson County since 1835 and in Independence since 1865. For more than 25 years, she has researched stories on local history. She will share them in her presentation, *Better Than a Castle in Scotland*.



## Speaker Series | David Owen

Friday, February 23, 3:00 p.m.  
Westport Room

David Owen, resident Carol Owen's son, has been a staff writer for *The New Yorker* since 1991. He was previously a contributing editor at *The Atlantic Monthly* and a senior writer at *Harper's*. He is a contributing editor at *Golf Digest* and *Popular Mechanics*, and is one of The Fifty Funniest American Writers. David is the author of more than a dozen books, including his latest, *Where the Water Goes: Life and Death along the Colorado River*.



## ART BLOCKS | Donna Houtteman

Monday, February 19, 3:00 p.m.  
Westport Room

This month Donna Houtteman presents *Baroque Art*. Donna is the leading voice behind the Art Conversation Series for Continuing and Professional Studies at the Kansas City Art Institute.

**NOTE:** We will not have an ART Blocks course in March. Donna will be out of town. We'll see her again in April!



## Speaker Series | Julián Zugazagoitia

Thursday, February 22, 3:00 p.m.  
Westport Room

Julián Zugazagoitia, Director of the Nelson-Atkins Museum of Art, will talk about *Through the Eyes of Picasso*, a major exhibition that explores Pablo Picasso's life-long fascination with African and Oceanic art, as well as works from the Americas, uniting his paintings and sculpture with art that fueled his own creative exploration. The Nelson-Atkins is the only U.S. venue for this groundbreaking exhibition.



## Metropolitan Opera at the Plaza Cinemark | La Bohème

Saturday, February 24  
BSP bus departs at 10:45 a.m.

Enjoy the Met's *Live in HD* movie-theater transmission of one of the most widely performed operas in the world, Puccini's *La Bohème*, which depicts the joys and sorrows of love and loss in the Latin Quarter of Paris.

**Sign up with the concierge.**



# Chaplain's CORNER



February 14th is a date we associate with the heart. We give and receive heart-shaped cookies, boxes of chocolate, and message candies, all in celebration of the loves of our lives from puppy love to bestest friends to true love.

This year on February 14th, many of us will contemplate the truest love of all: the love of God made real in the life, death, and resurrection of Jesus. We will begin the season of Lent with ashy smudges on our foreheads and commit ourselves to spiritual disciplines through which we acknowledge our lapses of love and ask for the grace to do better.

Please note, there will be an Ash Wednesday service in the Chapel on February 14 at 1:00.

Also, if you have palms or palm crosses from last year, please bring them to me *before* Ash Wednesday so they can be burned for use on Ash Wednesday.

Blessings to all for a holy Lent!

—Chaplain Kathy Hall

## Roman Catholic Mass

Father Mattingly | Wednesday, Feb. 7 | 9:30 a.m. | Chapel

Father Bob | Wednesday, Feb. 21 | 9:30 a.m. | Chapel

## Ash Wednesday Liturgy

The Ash Wednesday liturgy, with imposition of ashes, will take place in the Chapel on February 14, at 1:00 p.m. All are welcome to attend.

## Lenten Studies

We will work with a 5-session DVD program called *Embracing a Life of Meaning*. We will begin on Tuesday, February 20, at 11:00 a.m. in the Westport Room, and meet there at the same time for the following four weeks. You don't need to bring anything—just yourself!

## Good Books

We will meet Monday, February 26, at 3:00 p.m. in the Chapel. We'll be reading *To Kill a Mockingbird*, by Harper Lee, available in print and audio CD formats (not electronic, sorry). Please join us!



## Speaker Series | Patrick Dobson

Tuesday, February 27, 3:00 p.m.  
Westport Room

Kansas City writer, scholar, and professor Patrick Dobson, Ph.D., is the author of *Seldom Seen*, about his experiences walking from Kansas City to Helena, Montana. His latest book, *Canoeing the Great Plains*, a Thorpe Menn and High Plains Book Award winner, recounts his adventures canoeing the Missouri River back from Helena to Kansas City.



## The Great Courses | Museum Masterpieces: The Metropolitan Museum of Art

Wednesday, February 28  
3:00 p.m.  
Westport Room

In his visually-rich lectures, Professor Richard Brettell takes us through The Metropolitan Museum of Art on a personal tour driven by his enthusiasm and ceaseless curiosity.

This month, enjoy Lectures 21 and 22.

**HAPPY**



**BIRTHDAY**

**Beulah Thompson**, February 5

**Clara Christiansen**, February 9

**Ann Hotchkiss**, February 9

**Jean Green**, February 11

**Bobbie Ellis**, February 14

**Jane Williams**, February 15

**Jeffrey Weidman**, February 17

**Jane Leifer**, February 25

**Betty Shouse**, February 27

## IN LOVING MEMORY



*Jerre Steenhof*

*Robert Aber*

*Mary Green*

*From Chaplain Kathy*

### FABULOUS FOOD FOR THOUGHT

If you can read this message, you are more blessed than over two billion people in the world who cannot read at all. Have a good day, count your blessings, and pass this along to remind everyone else how blessed we all are.

—Author unknown



We're lucky to have many beneficial mind-body offerings here at BSP, and for our new residents who need an introduction, below is a re-cap of weekly happenings in the Activity Center.

#### Stretch Class

10:00 a.m.

Monday, Wednesday, & Friday

#### Strength & Balance Workout

10:00 a.m. Tuesday

9:30 a.m. Thursday

#### Chair Yoga

10:30 a.m. Thursday

#### Art Class

1:00–3:00 p.m. Monday

#### Arthritis Exercise

1:30 p.m. Tuesday & Thursday

If you don't already participate, consider joining in and call Helen with any questions!

## PLAZA LIBRARY



**Thursday, February 22**

**BSP bus departs 2:45 p.m.,  
returns to BSP 4:00 p.m.**

The BSP Plaza library trip takes place on the last Thursday of each month.

**Sign up with the concierge.**





# Cocktail Hour

## WITH PIANIST DON HATFIELD

Friday, February 23, 5:00 p.m.\*

Madison Living Room | Canterbury Dining Room

Don will perform while wine is served, 5:00–6:30 p.m.

*\*This month only, Cocktail Hour begins half an hour later.*

Listen while you sit in the Pub, dine in the Canterbury Dining Room, or enjoy wine and cocktails in the Madison Living Room. Daily special and full dinner menu is available, also with complimentary drinks.

